

SUSTAINABLE
AND RECYCLED

AGUA

PERFORMANCE UPHOLSTERY FABRICS

VerdEco Collection

Sustainable melange upholstery fabric
made without water from recycled textiles

VerdEco Collection | v.41.0



Recycled
Textile



Zero Water Used
in Production



Bleach
Cleanable



Fire Retardant
Crib 5/IMO



Martindale Abrasion
Severe Contract



Phthalate
Free



REACH
Compliant

VerdEco

Sustainable melange upholstery fabric made without water from recycled textiles

Perfect for:
Commercial, cruise, hospitality, leisure and workplace*

Fabric Specifications	
* VerdEco is designed as a highly sustainable upholstery fabric using 100% recycled textiles, and is manufactured with a zero water consumption process. Please note this means that, unlike the standard Agua range, VerdEco is not waterproof, stain resistant, or anti-microbial.	
Flame retardant	BS7176 Crib 5, BS EN 1021-1:2006 1&2, BS5852 Crib 5, IMO Annex 1 Part 8.
Martindale	Severe Contract > 90,000.
Composition	100% recycled textiles.
Breathable	Moisture vapour permeable.
Width	140cm (55") wide.
Weight	370GSM.

Technical Information

- We recommend a minimum of 32 stitches per 10 cm (8 stitches per inch) and seams must have a minimum 12mm (0.5") bite on the fabric.
- Please note that all fabric offered is subject to minor tolerance in respect of shade and other slight variations.
- Technical specifications may be amended, please check for the latest information.

- Please ask if you require a sample of the current batch available but be aware that stock can move quickly.
- VerdEco can be colour co-ordinated with Agua faux leather collections to produce stunning furniture with dual textured finishes.

Fabric Care

- Use a vacuum cleaner or soft brush to remove dust and solid particles.
- Always try cleaning products on a hidden piece of fabric to test suitability.
- Wipe frequently with a damp cloth to maintain the appearance of the fabric.
- All spillages should be removed immediately with a clean absorbent cloth.
- Poorly fixed clothing dyes, e.g. Denim, will cause permanent staining. Most stains can be removed using cold/warm water and a clean microfibre cloth.
- Stains from products containing oil and grease should be treated with a spirit based solution.
- Can be steam cleaned in situ.

- Can be cleaned with mild Hypochlorite solutions (up to 10,000 ppm of available chlorine - including Haz Tabs and Chlor-Clean) or Mineral Spirit for infection control purposes.
- If soap based cleaners are used, all soap residues must be rinsed from the fabric.
- Machine washable with care to 30°C.
- Do not tumble dry.
- Remove all stains immediately before they set.
- Please refer to the VerdEco's Fabric Technical Specifications PDF download on the Agua website for further details.
- Do not use solvents, chemical agents, waxes or polishes as this will damage the surface of the fabric.

Our Environmental Policy

Our products have always been phthalate free and Reach* compliant. Our processes are non-toxic and the methods used during manufacture and finishing ensure that potentially hazardous accidental cross contamination is minimised to the greatest degree possible. All our fabrics meet the stringent Oeko-Tex**

standards, regardless of origin, so are free from harmful chemicals and safe for human use.

* Registration, Evaluation, Authorisation and Restriction of Chemicals (EU regulation: 18th December 2006)
** See more: www.oeko-tex.com

Samples and Enquires

You can contact us for samples, order enquiries or information about any of our fabric ranges here:

Vyva Fabrics
TT. Vasumweg 140
1033 SH Amsterdam, The Netherlands
Tel +31(0)20-6599523 info@vyvafabrics.nl
samples@vyvafabrics.nl www.vyvafabrics.nl



Certificate No. FS 531220

AGUA

PERFORMANCE UPHOLSTERY FABRICS

AGUA

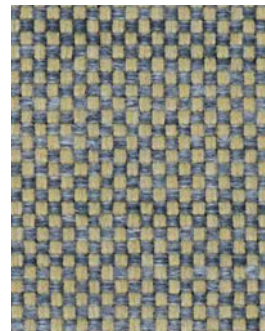
VerdEco



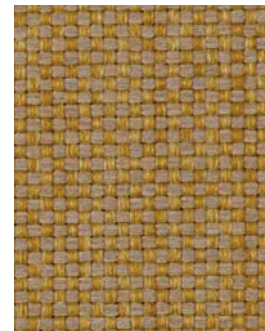
VerdEco Limestone



VerdEco Ash



VerdEco Catkin



VerdEco Straw



VerdEco Putty



VerdEco Flint



VerdEco Willow



VerdEco Mustard



VerdEco Mushroom



VerdEco Cloud



VerdEco Moss



VerdEco Lichen



VerdEco Stone



VerdEco Slate



VerdEco Bracken



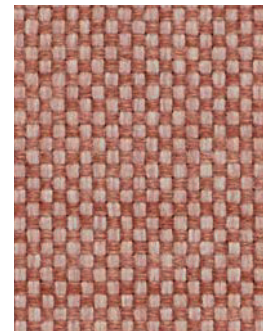
VerdEco Russet



VerdEco Mineral

AGUA

VerdEco



VerdEco Petal



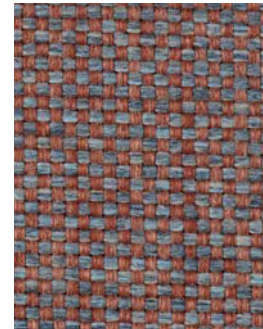
VerdEco Blossom



VerdEco Pebble



VerdEco Celandine



VerdEco Tawny



VerdEco Chestnut



VerdEco Sky



VerdEco Duckegg



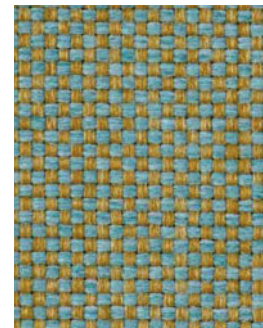
VerdEco Hazelnut



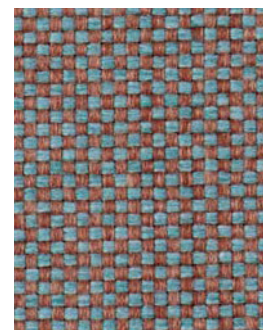
VerdEco Heather



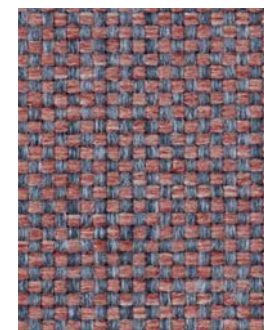
VerdEco Marine



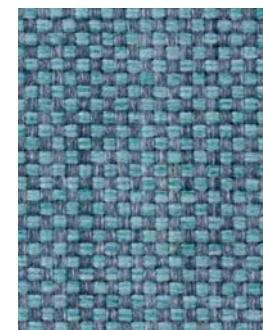
VerdEco Meadow



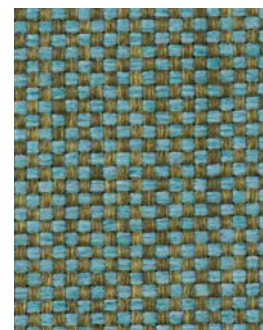
VerdEco Kingfisher



VerdEco Bramble



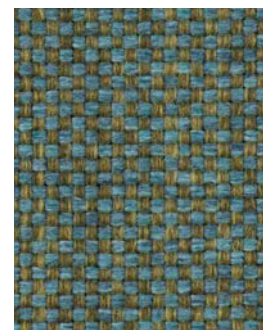
VerdEco Cornflower



VerdEco Seagrass



VerdEco Aqua



VerdEco Spruce