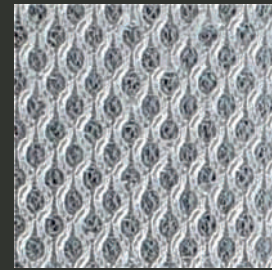


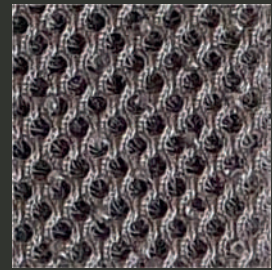
**NON-SKID / SCRIM
UNDERLINING AND HEAD- & HULLLINING**



A14 Non-skid Acrylic Dots White



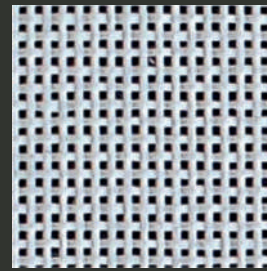
A13 Non-skid 3D Mesh White



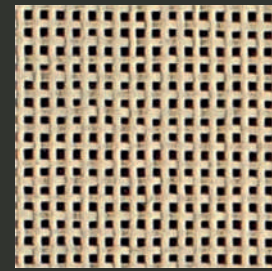
A12 Non-skid 3D Mesh Anthrazite



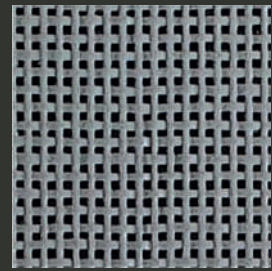
A11 Non-skid 3D Mesh Black



3869 Scrim White



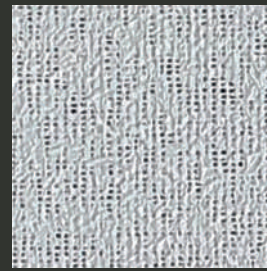
3865 Scrim Beige



3867 Scrim Grey



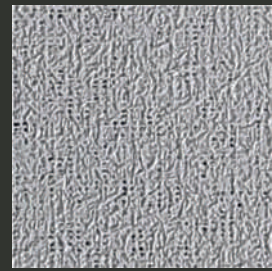
3868 Scrim Black



390964 Underlining White



423519 Underlining Almond



385646 Underlining Lite Grey



316948 Underlining Black



3641930 Viva Weld 5cm Stripe Maritime Mystic White



101 Viva Cover Creme

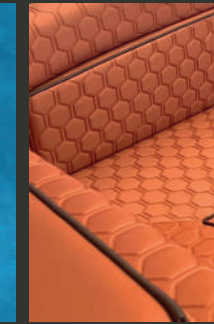
INDOOR - OUTDOOR



**INDOOR & OUTDOOR
CONTRACT FURNITURE FABRICS**

MARINE COLLECTION

INDOOR - OUTDOOR



CHARACTERISTICS	Atlantis	Beacon	Carbon Fiber	Coastline	Cuzco	Encore	Horizon	Maritime	Mosaïque	Ocean	Rage	Ridley	Seaborne
Composition Vinyl:	•	•	•	•	•	•	•	•	•	•	•	•	•
Weight:	657	619	657	745	695	657	657	661	657	657	725	695	710
Roll Width:	137	137	137	137	137	137	137	137	137	137	137	137	137
Roll Length:	30	36,5	27,4	36,5	27,4	30	30	25	30	30	27,4	36,5	27,4
Abrasion:	>100.000	>100.000	>100.000	>300.000	>300.000	>100.000	>100.000	>300.000	>100.000	>100.000	>100.000	>100.000	>100.000
Cold Crack:	-23 °C	-20 °C	-23 °C	-32 °C	-32 °C	-23 °C	-23 °C	-20 °C	-23 °C	-23 °C	-32 °C	-32 °C	-32 °C
UV-Resistance (Blue Wool Scale):	≥7	650 Hours	≥7	≥7	≥7	≥7	≥7	650 Hours	≥7	≥7	≥7	≥7	≥7

Flame retardancy*:	Atlantis	Beacon	Carbon Fiber	Coastline	Cuzco	Encore	Horizon	Maritime	Mosaïque	Ocean	Rage	Ridley	Seaborne
EU EN 1021 Part 1 & 2	•	•	•	•	•	•	•	•	•	•	•	•	•
UK BS 5852 (CRIB 5)	•	•	•	•	•	•	•	•	•	•	•	•	•
EU IMO MED	•	•	•	•	•	•	•	•	•	•	•	•	•
EU IMO FTP 2010 Part 8 (3.1 & 3.2)	•	•	•	•	•	•	•	•	•	•	•	•	•
DE DIN 4102 (B2)	•	•	•	•	•	•	•	•	•	•	•	•	•
US FMVSS 302	•	•	•	•	•	•	•	•	•	•	•	•	•
US CAL TB 117-2013, Sec. E	•	•	•	•	•	•	•	•	•	•	•	•	•

*This term and any corresponding data refer to the typical performance in the specific tests indicated and should not be construed to imply the behaviour of this or any other material under actual fire conditions.

FINISHES AND TREATMENTS

Antibacterial	•	•	•	•	•	•	•	•	•	•	•	•	•
Antimicrobial	•	•	•	•	•	•	•	•	•	•	•	•	•
Mildew Resistant	•	•	•	•	•	•	•	•	•	•	•	•	•
Sulfide Stain Resistant	•	•	•	•	•	•	•	•	•	•	•	•	•
Anti-stain Finish	•	•	•	•	•	•	•	•	•	•	•	•	•
Bleach Cleanable	•	•	•	•	•	•	•	•	•	•	•	•	•
PHTHALATE FREE	•	•	•	•	•	•	•	•	•	•	•	•	•

SUSTAINABILITY

REACH RoHS	•	•	•	•	•	•	•	•	•	•	•	•	•
Environment friendly	•	•	•	•	•	•	•	•	•	•	•	•	•

CARE AND CLEANING 🧽 🧼 🚿 🚫 🚫 🚫

For optimum care and cleaning please read the following instructions and recommendations.

The coated fabric should be cleaned periodically in order to maintain its appearance and prevent build-up of dirt and contaminants. Any stain, spills, or soiling should be cleaned up immediately to prevent the possibility of permanent staining. Use a mixture of 1:1 liquid soap (neutral pH) and water or our approved cleaning products for coated fabrics to remove stains on the surface of the material. Completely remove excess cleaner with a white, clean, damp cloth; and dry the surfaces afterwards. Lacquers, strong cleaners, detergents, xylene-based solutions, acetone, or ketone (MEK) cause immediate damage and contribute to the deterioration of the material. The use of such cleaners is at the owner's risk.

Cleaning methods to remove tougher stains

Step 1: Coffee, juice, red wine, sauces, chocolate, grease, crayon and suntan lotion. Remove excess spill with a damp cloth. Clean with a 1:1 mix of neutral liquid soap and water. Next, rinse with clean water and dry.

Step 2: Make-up. Use a straight application of neutral PH soap. Wipe with a clean white cloth or soft brush, rinse with clean water, and dry.

Step 3: Blood, urine, faeces and all other tough stains. Use a 1:10 mix of Isopropyl alcohol and water. Rinse thoroughly with clean water and dry.

For cleaning: use a soft white cotton cloth saturated with the recommended cleaning agent and rub the stain in random circles, ten times or more. Pat dry with another soft white cotton cloth and check the results. Do not use steel bristle brushes, abrasive scouring pads or metal, these cause permanent damage to the fabric. Methods 2 & 3 are not recommended for everyday cleaning! After cleaning, rinse the area with clean water, then dry with a clean, lint-free cloth. Failure to remove chemical residue will cause discolouration of the coated fabric surface to manifest itself earlier in the life cycle of the product.

SAMPLES AND ENQUIRES

samples: samples@vyvafabrics.nl | orders: info@vyvafabrics.nl

MARINE COLLECTION



BY VYVA FABRICS

Indoor - Outdoor



ANTIBACTERIAL
ANTIMICROBIAL



BLEACH
CLEANABLE



FLAME
RETARDANT



STAIN
RESISTANT



WATERPROOF



MILDEW
RESISTANT



REACH
COMPLIANT



INDOOR
OUTDOOR

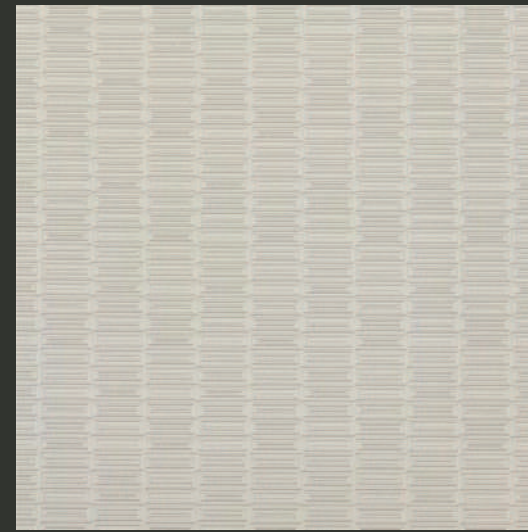
INFO@VYVAFABRICS.NL

WWW.VYVAFABRICS.NL

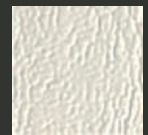
TEL +31 (0)20 6599523

MARINE COLLECTION

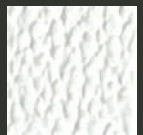
INDOOR - OUTDOOR



9944 Encore Alabaster



0018CP Maritime Off White



3500 Ridley White Sand



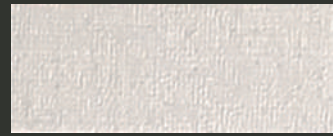
3501 Ridley White Sand Perforated



3507 Coastline Sand Dust



3506 Coastline All White



9937 Horizon Alpine



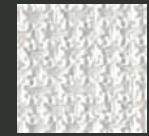
9947 Mosaïque Ibis



3518 Seaborne Alabaster



1102 Carbon Fiber Pearl White



541890 Beacon Alabaster



0020CP Maritime Mystic White



3524 Seaborne Pearl White



0006EU Maritime Champagne



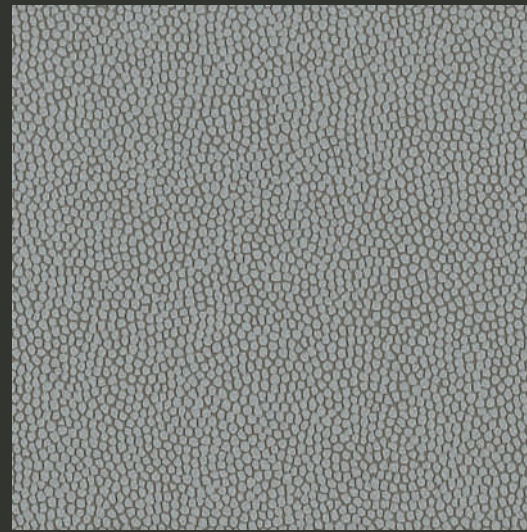
0028CP Maritime Ivory



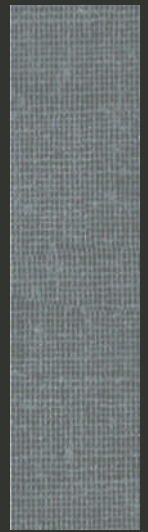
1104 Carbon Fiber Vanilla



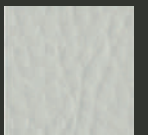
0051 Atlantis Cream



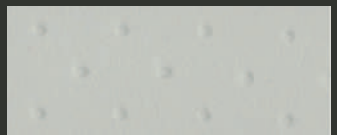
9951 Mosaïque Humus



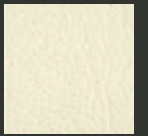
9941 Horizon Shadow



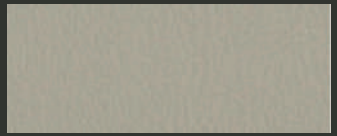
3504 Ridley Grey Mist



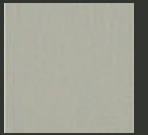
3505 Ridley Grey Mist Perforated



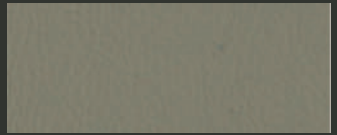
0023CP Maritime Latte



3510 Coastline Sandcastle



0027CP Maritime Sandsurf



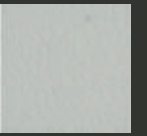
3513 Coastline Sealskin



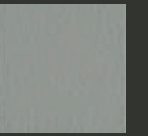
9946 Encore Noir



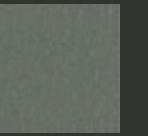
9938 Horizon Ivoire



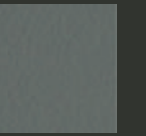
3512 Coastline Fossil



3515 Coastline Pebble Grey



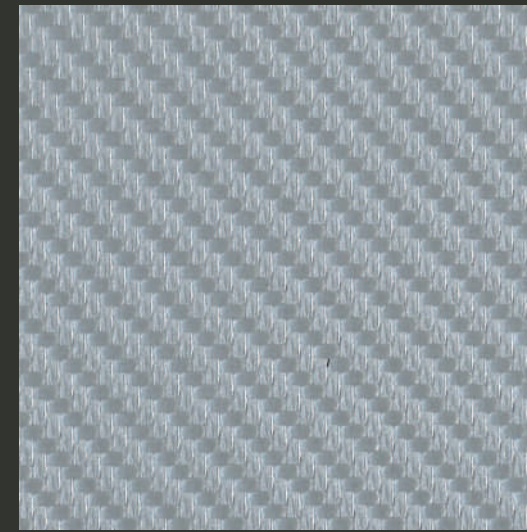
0026CP Maritime Moonrock



3514 Coastline Sardine Grey



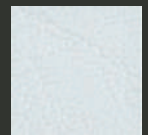
4031 Cuzco Storm



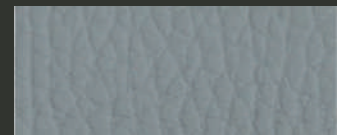
1101 Carbon Fiber Silver



9940 Horizon Argentato



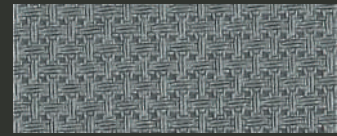
0007CP Maritime Grey Light



0046 Ocean Granite



3516 Coastline Harbor Grey



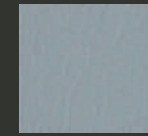
541895 Beacon Silver Fog



0008CP Maritime Slate Black



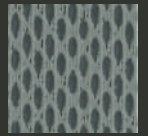
9001 Carbon Fiber Anthracite



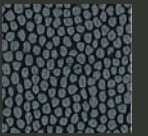
0017CP Maritime Cinder Grey



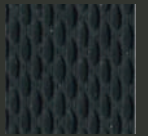
0039 Atlantis Dark Grey



2302 Rage Stone Grey



9948 Mosaïque Petroleum



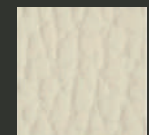
2247 Rage Black Berry



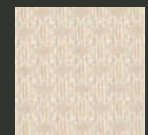
3522 Seaborne Pitch Black



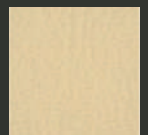
1100 Carbon Fiber Black



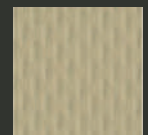
0052 Ocean Cream



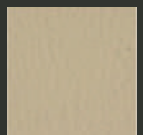
541893 Beacon Champagne



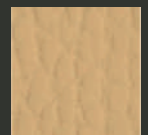
0021CP Maritime Lite Beige



2300 Rage Sand



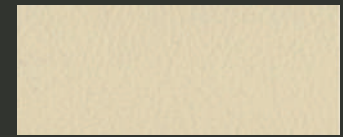
3509 Coastline Biscotti



0061 Ocean Sand Dune



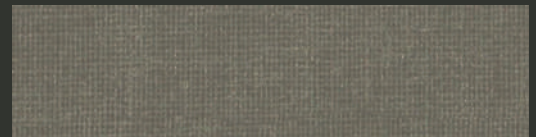
0062 Atlantis Sand Dune



3508 Coastline Buttermilk



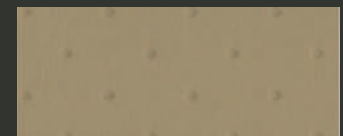
0001EU Maritime Oatmeal



9942 Horizon Aurum



9939 Horizon Bamboo



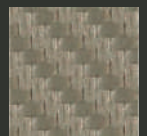
3503 Ridley Sand Dune Perforated



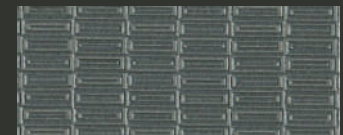
3502 Ridley Sand Dune



1103 Carbon Fiber Ginger



1103 Carbon Fiber Ginger



9945 Encore Mineral



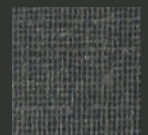
541667 Beacon Shore



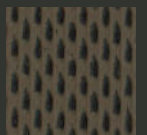
0003 Carbon Fiber Granite



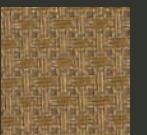
0003 Carbon Fiber Granite



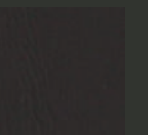
9943 Horizon Soiree



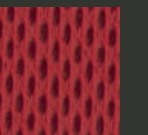
2299 Rage Cocoa



541896 Beacon Old Gold



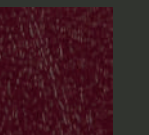
0057 Atlantis Dark Brown



2301 Rage Cranberry



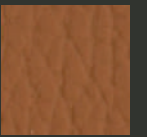
0019CP Maritime Lollipop Red



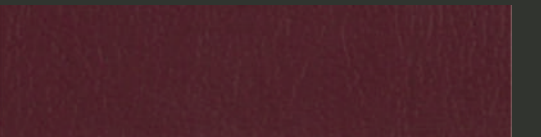
3520 Seaborne Currant



3511 Coastline Clay



0055 Ocean Cognac



0015CP Maritime Hearty Burgundy



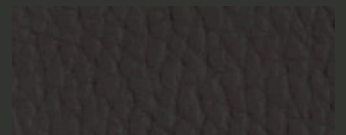
9949 Mosaïque Dakota



0025CP Maritime Orange



9950 Mosaïque Coconut



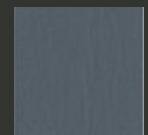
0056 Ocean Dark Brown



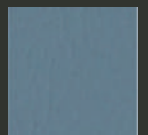
0022CP Maritime Sport Purple



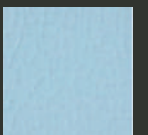
0016CP Maritime Yellow



0009CP Maritime Smoke Grey



3526 Atlantis Rainfall



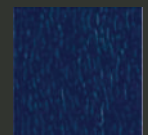
3525 Atlantis Mineral Ice



9002 Carbon Fiber Graphite



541898 Beacon Lead



3521 Seaborne Scotch Blue



0024CP Maritime Lime



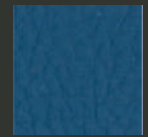
0014CP Maritime Laguna Green



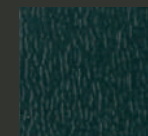
3527 Atlantis Deep Ocean



2298 Rage Deep Blue



4029 Cuzco Blueberry



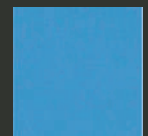
3523 Seaborne Duck Green



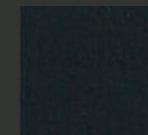
0030 Atlantis Forest Green



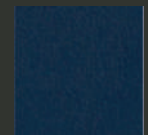
0013CP Maritime Tide Pool Green



0012CP Maritime Blue Bay



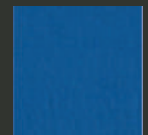
3517 Coastline Crow



0033 Atlantis Navy Blue



0010CP Maritime Royal Blue



0011CP Maritime Regal Blue