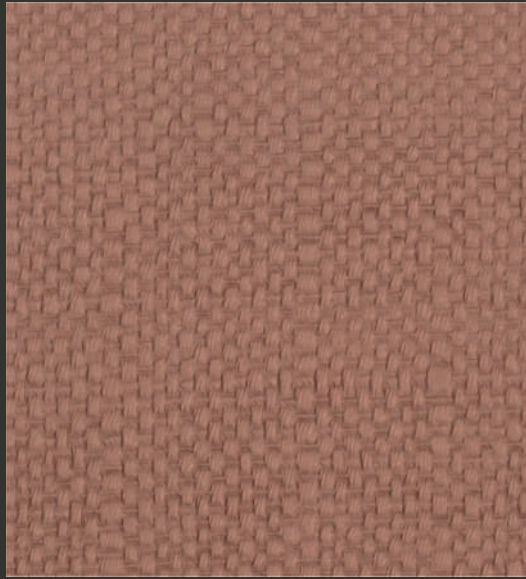


SODA & STRAW

INDOOR



STRAW 3400 ST
BELLINI



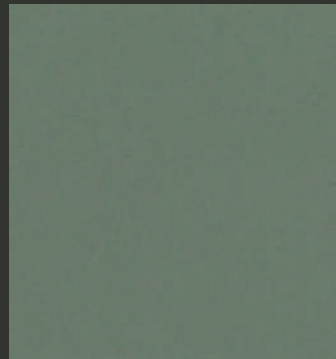
STRAW 3404 ST
ARIZONA



3403 SO
CARROT JUICE



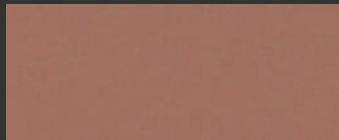
3402 ST
MIMOSA



SODA 3405 SO
GREEN TEA



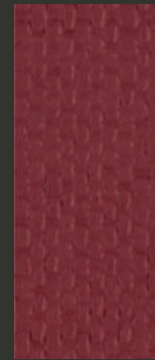
SODA 3411 SO
CASSIS



SODA 3401 SO
ROSE LEMONADE



3423 SO
KOMBUCHA



3410 ST
ROSATO



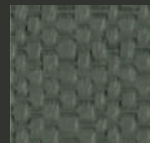
3408 ST
IRISH COFFEE



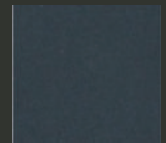
3409 SO
JAEGER



STRAW 3422 ST
ROOT BEER



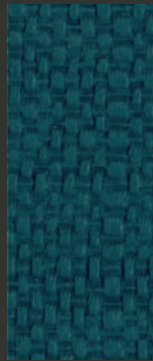
3406 ST
EARL GREY



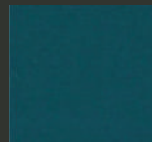
3417 SO
DANIELS



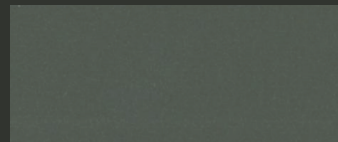
3418 ST
STOUT



3412 ST
ABSINTH



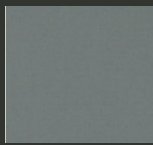
3413 SO
FERNANDES



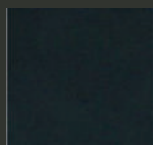
SODA 3407 SO
ICE TEA



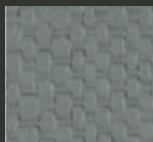
3416 ST
JACK



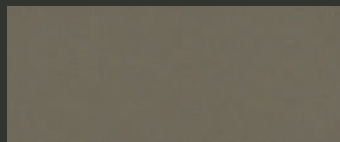
3415 SO
GIN



3419 SO
DROP SHOT



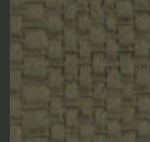
3414 ST
TONIC



SODA 3425 SO
CHAMPAGNE



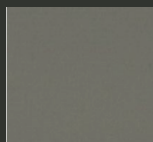
3424 ST
PROSECCO



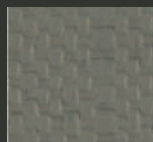
3420 ST
SHANDY



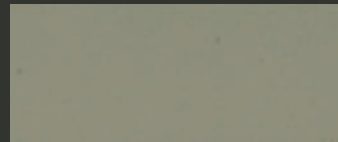
3421 SO
GINGER ALE



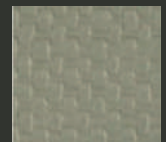
3427 SO
CAIPIRINHA



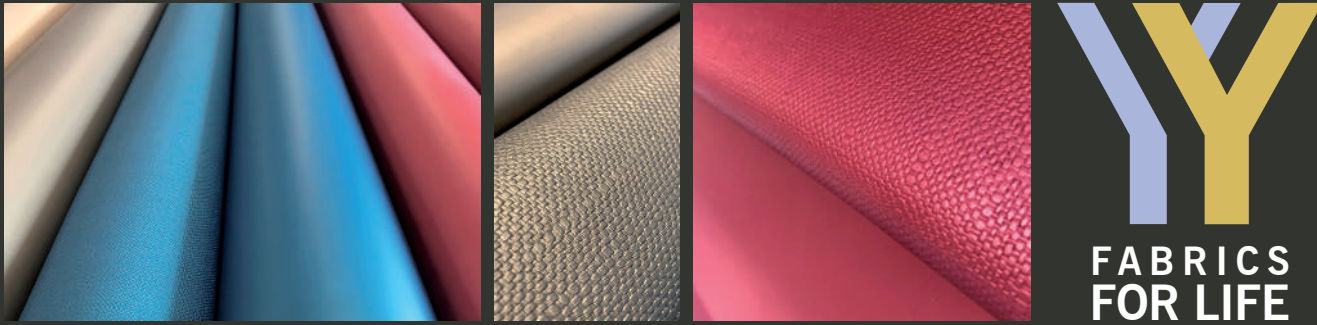
3426 ST
MOJITO



SODA 3429 SO
VANILLA MILKSHAKE



3428 ST
SCROPPINO

**NL**

Vyva Fabrics heft het glas op de nieuwste collectie kunstleer: Soda & Straw

De collectie telt aantrekkelijke jute-achtige texturen, sommige verfijnd, andere wat grover, maar allemaal met de look van natuurlijk textiel. De bijzondere, aardse kleuren, van klassiek ossenbloedrood tot trendy petrol, laten zich goed combineren. Soda & Straw nodigt uit tot een spel met texturen en met de uitnodigende, warme kleurencocktail. In de collectie is ook egaal, glad kunstleer in smakelijke kleuren opgenomen, waaronder lichtgrijs Gin, olijfgroen Green Tea en zandkleurig Champagne.

EN

Vyva Fabrics proposes a toast to the latest collection of artificial leathers, Soda & Straw

The collection consists of alluring burlap-like textures, some delicate, other a bit coarser, but all share a very natural, textile-like look. The exceptional, earthly tones, among which classic oxblood red and trendy petrol, all combine well together. Soda & Straw entices into playing with textures and with the inviting, warm cocktail of colours. The collection also contains smooth artificial leather in appetising colours, such as light grey Gin, olive green Green Tea and sandy Champagne.

CHARACTERISTICS

Composition:	Topcoat: 70% Vinyl Backing: 30% Polyester
Weight:	800 gr / m ²
Thickness:	1,00 mm
Roll Width:	140 cm
Roll Length:	30 meter
Abrasion resistance:	>100.000 cycles (Martindale) EN ISO 12947-2
UV-resistance:	(BS EN ISO 105-BO2:1999) (Minimum BWS** 5): Grade 5
Finishes:	Anti-Mildew (ISO 22196-2007) (ASTM Test Method 147, ASTM Test Method 30-III) Spotless finish for easy cleaning
Flame Retardancy:	BS5852 Crib 5 Cigarette and Match IMO FTP 2010 Code Part 8 Appendix 1