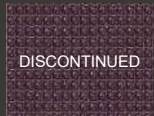


LEGEND

Indoor - Outdoor



DISCONTINUED

2291
BLOSSUM

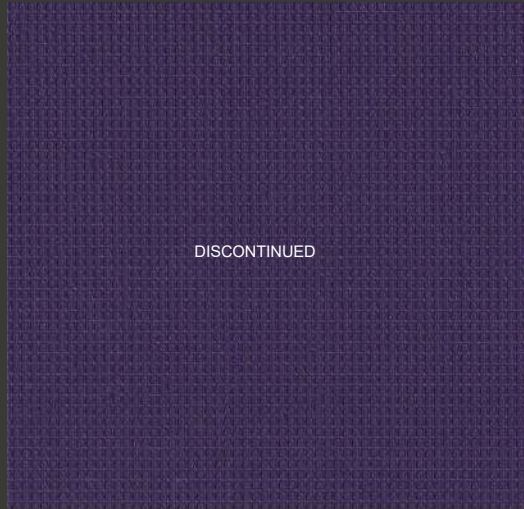


DISCONTINUED

2290
CHIANTI



2293
SORBET



DISCONTINUED

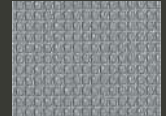
LEGEND 2292 EGGPLANT



2286
RAVEN WING



2295
ATLANTIC

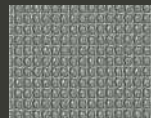


2285
GRANITE



DISCONTINUED

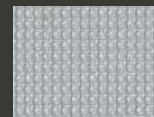
2287
PELICAN



2288
MUD



2268
ARCTIC



2296
DOVE



2266
SNOWY



2280
DEW DROP



2267
CREAM



2294
STEEL BLUE



2273
GRENADINE



2281
CYAN



2282
RIVIERA



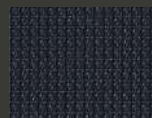
2275
ADOBE



2274
HOT SAUCE



2283
BAYOU



2284
ADMIRAL



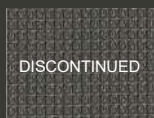
2277
SASSY



2271
CHARCOAL



2276
PARROT

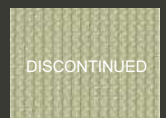


DISCONTINUED

2289
WALNUT



2272
FUDGE

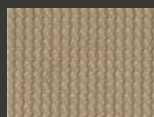


DISCONTINUED

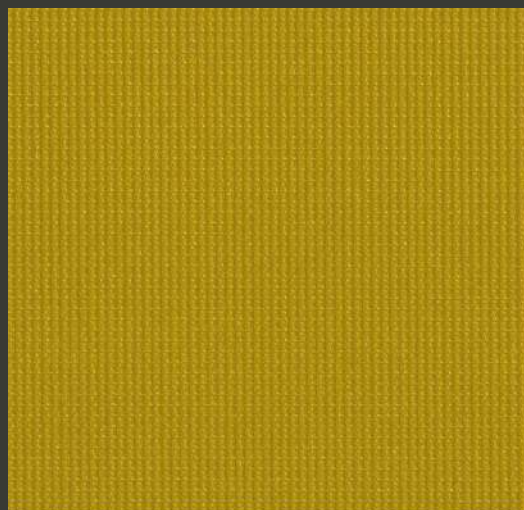
2279
ALOE



2270
PINE CONE



2269
CASHMERE



LEGEND 2278 NECTAR

LEGEND

Indoor - Outdoor



NL

Legend is een vinyl met een eigentijds ontwerp dat een elegante epingle stof nabootst. De collectie is beschikbaar in 31 kleuren.

Legend voldoet aan zeer hoge eisen en is geschikt voor de volgende markten; Contract, Healthcare, Transportation, Marine/Outdoor, Office Seating, Residential, Airports en Hotels. Legend is een sterk materiaal met een zeer hoge slijtvastheid en gemakkelijk in onderhoud, kan gereinigd worden met water en zeep. Legend heeft zeer hoge kleur- en lichtechtheden.

EN

Legend is a vinyl which features a contemporary design, imitating an elegant epingle fabric. The collection is available in 31 colors.

Legend meets very high standards and is suitable for the following markets; Contract, Healthcare, Transportation, Marine/Outdoor, Office seating, Residential, Airports and Hotels. Legend is a strong material with a high abrasion and easy to maintain, can be cleaned with water and mild soap. Legend also has a high UV stability and light fastness.

CHARACTERISTICS

Composition:	Topcoat: 100% Vinyl (Mildew resistant backing and face) Backing: 100% Polyester Hi-Loft
Weight:	680 gr / m ²
Thickness:	1,15 mm
Roll Width:	137 cm
Roll Length:	30 meter
Abrasion resistance:	>100.000 cycles (Martindale)
UV-resistance:	XENOTEST DIN 54004/ NTC 1479
Finishes:	Antifungal- Antibacterial and Anti-static, sulfide Stain Resistant EN 71-3 Safety of Toys (Migration of certain elements)
Flame Retardancy:	EU: EN 1021 Part 1 & 2 EU: IMO FTP 2010 Code MSC.307 (88) Part 8 ES: UNE 23.727-90 1R/M.2 FR: NF P 92-503/M2 DE: DIN 4102 B2 IT: UNI 9175 (1987)/UNI 9175/Fa1 (1994) Classe 1.IM (UNO I EMME) AT: ÖNORM B 3825, Gruppe 1- Schwerbrennbares Verhalten AT: ÖNORM A 3800 Teil 1, Qualmbildungsklasse Q1 US: FMVSS 302 /FAR 25.853 (MED) Marine Equipment Directive ECE R118 EN 71-2:2006+A1:2007 – Safety of Toys-Part 2: Flammability

VYVA FABRICS

INFO@VYVAFABRICS.NL WWW.VYVAFABRICS.NL