

SILVERGUARD

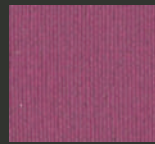
INDOOR - OUTDOOR



SG95020
BASIL



SG95009
SAGE



SG92097
ORCHID



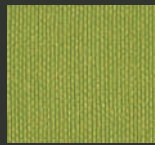
SG92099
LOTUS



SG94004
ICE



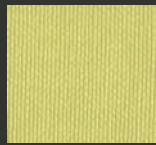
SG92089
WHITE



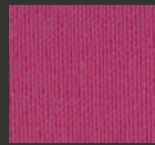
SG95008
PISTACHO



SG95019
CELERY



SG92092
AVOCADO



SG97002
MAGENTA



SG92098
ROSE



SG92090
ICECREAM



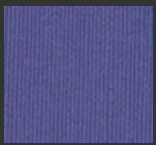
SG91077
CREAM



SG95063
FOREST



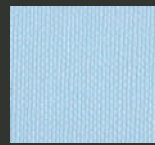
SG95010
BOTTLE



SG92104
ULTRAVIOLET



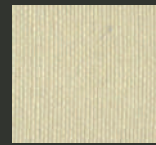
SG97001
AUBERGINE



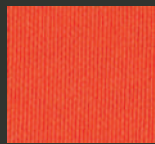
SG92103
SKYLIGHT



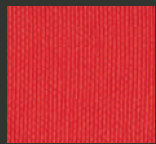
SG90001
MACADAMIA



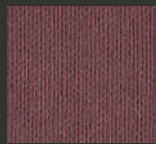
SG91051
SISAL



SG92096
TOMATO



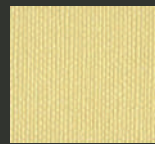
SG92095
GRENADINE



SG96004
RUBIN



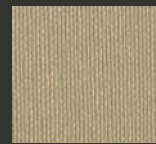
SG92016
RASPBERRY



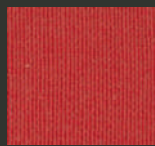
SG92091
CITRUS



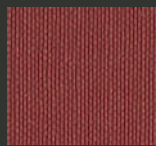
SG90002
SANDSTONE



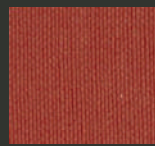
SG91078
CHAMPAGNE



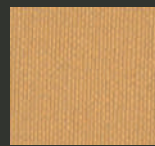
SG92011
RED



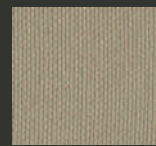
SG92064
WINE



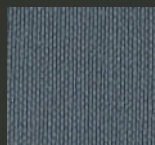
SG92012
SUNKIST



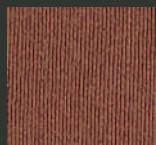
SG92105
CAMEL



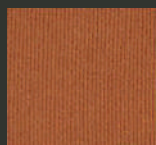
SG91010
BEIGE



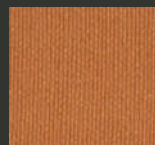
SG94002
STORM



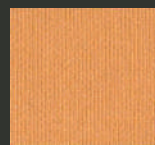
SG91014
UMBER



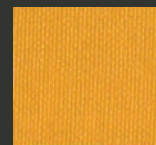
SG96061
MANDARIN



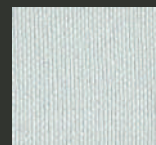
SG90013
ORANGE



SG96062
MELON



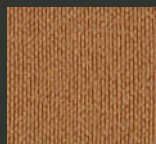
SG96065
SAFRAN



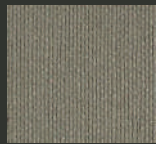
SG92101
ALUMINIUM



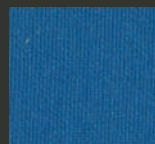
SG99002
CARBON



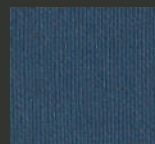
SG92003
COBRE



SG90009
TAUPE



SG93067
DELFT



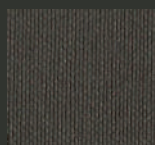
SG93007
SAPPHIRE



SG92093
SQUASH



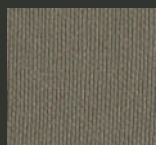
SG94001
PLATA



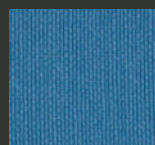
SG90005
MOCCA



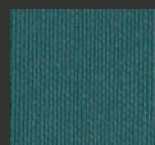
SG90073
LUGGAGE



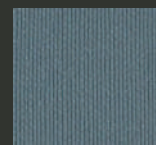
SG94012
SHIITAKE



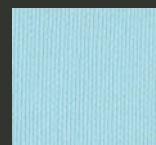
SG93066
BALTIC



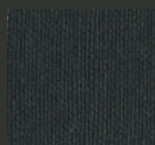
SG92100
TEAL



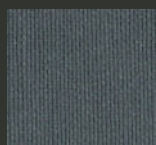
SG92094
PETROL



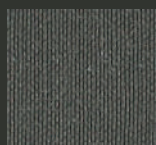
SG92102
CORAL



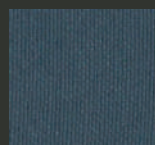
SG99001
BLACK



SG94003
GRAPHITE



SG94024
METEOR



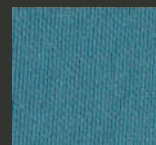
SG93068
JET



SG94010
TITANIUM



SG94011
STERLING



SG93001
TURQUOISE



CHARACTERISTICS **INDOOR - OUTDOOR**

Composition:	Topcoat: Vinyl / Urethane
Backing:	100% Polyester Hi-Loft ² ™
Weight:	685 gr/m ²
Roll Width:	min. 137 cm
Roll Length:	+/- 30 m
Abrasion:	>300.000 cycles (MARTINDALE)
Cold Crack:	-23 °C
UV-Resistance:	ISO 105 B02: ≥ 7/8 (Blue Wool Scale) ISO 104 B04: ≥ 4/5 (Grey Scale)
Flame retardancy*:	EU EN 1021 Part 1 & 2 EU ECE R 118.03 (R118.02 Anx. 6,7 & 8) EU (MED) Marine Equipment Directive EU IMO FTP 2010 Code MSC.307 (88) Part 8 3.1 & 3.2 EU EN 71-2:2006+A1:2007 Safety of Toys - part 2 DE DIN 4102 B2 IT UNI 9175 Classe 1.1M ES UNE 23.727-90 1R/M.2 FR NF P 92-503 (M2) AT ÖNORM B 3825, Gruppe 1 AT ÖNORM A 3800 Teil 1 US FMVSS 302 US CAL TB 117-2013, Sec. E US FAR 25/853

*This term and any corresponding data refer to the typical performance in the specific tests indicated and should not be construed to imply the behaviour of this or any other material under actual fire conditions.

FINISHES AND TREATMENTS **PERMABLOK³**
ADVANCED VINYL PROTECTION

Antibacterial Protection, Antimycotic Protection, Antifungal Protection, Anti-stain Finish, Mildew resistant backing and face, Sulfide Stain Resistant, Anti-static Finish, EN 71-3 Safety of Toys (Migration of certain elements)

Virucidal Activity: ISO 18184:2019:¹
Coated Fabrics treated with PERMABLOK³ are proven to reduce the presence of Coronavirus** by more than 90% within one hour of contact.

ISO 21702:2019:²
All the Coated fabrics treated with PERMABLOK³ are capable of reducing the Coronavirus** activity by 99,9% within 24 hours of exposure on the surface.

Bacteriostatic Properties: ISO 22196:2011. Value of antibacterial*** activity R>2

SUSTAINABILITY **eco^{sense}**
ISO 14001 Environmental Management
Carbon Neutral
REACH | RoHS

SAMPLES AND ENQUIRES

samples: samples@vyvafabrics.nl | orders: info@vyvafabrics.nl

CARE AND CLEANING      

For optimum care and cleaning please read the following instructions and recommendations.

Disinfectant Use

The following information refers to the performance of PERMABLOK³ products in specific tests, conducted under laboratory conditions. Results may vary under actual conditions:

- Asepticare TB + II • Antifect (in 0.5 % dilution) • Caviwipes XL Packed
- Cleanisept Wipes • Clorox Healthcare Bleach • Germicidal Wipes
- Coverage Plus Germicidal Wipes • Desomed rapid • FD 366
- Hydrogen Peroxide Cleaner Disinfectant Wipes • Instrunet Anionsurf
- Lysol Foaming Disinfectant Cleaner • Microzid • Oxivir TB Wipes
- Oxycide Diluted -3oz/gl in water • PDI Sani-cloth bleach wipes
- Sanicloth AF 3 • Sodium Hypochlorite. Disinfectant. Bletach cleaner. Dilution: 1:10 mix of bleach and water. • Surfanios Premium (in 0,25% dilution) • Surfa'Safe Premium (in 0,25% dilution) • Super Sani-cloth
- Virex II 256 (1:256 Dilution) • Virox 5 Rtu • Wet wipe • Wex Cide 128 (1:128 dilution)

Rinse the area with clean water, then dry with a clean, lint-free cloth after using any disinfectants and cleaners.

Cleaning after Disinfection:

The coated fabric should be cleaned periodically in order to maintain its appearance and prevent build-up of dirt and contaminants. Any stain, spills, or soiling should be cleaned up immediately to prevent the possibility of permanent staining. Use a mixture of 1:1 liquid soap (neutral pH) and water or our approved cleaning products for coated fabrics to remove stains on the surface of the material. Completely remove excess cleaner with a white, clean, damp cloth; and dry the surfaces afterwards. Lacquers, strong cleaners, detergents, xylene-based solutions, acetone, or ketone (MEK) cause immediate damage and contribute to the deterioration of the material. The use of such cleaners is at the owner's risk.

Cleaning methods to remove tougher stains

Step 1: Coffee, juice, red wine, sauces, chocolate, grease, crayon and suntan lotion. Remove excess spill with a damp cloth. Clean with a 1:1 mix of neutral liquid soap and water. Next, rinse with clean water and dry.

Step 2: Make-up Use a straight application of neutral PH soap. Wipe with a clean white cloth or soft brush, rinse with clean water, and dry.

Step 3: Blood, urine, faeces and all other tough stains Use a 1:10 mix of Isopropyl alcohol and water. Rinse thoroughly with clean water and dry.

For cleaning: use a soft white cotton cloth saturated with the recommended cleaning agent and rub the stain in random circles, ten times or more. Pat dry with another soft white cotton cloth and check the results. Do not use steel bristle brushes, abrasive scouring pads or metal, these cause permanent damage to the fabric. Methods 2 & 3 are not recommended for everyday cleaning! After cleaning, rinse the area with clean water, then dry with a clean, lint-free cloth. Failure to remove chemical residue will cause discolouration of the coated fabric surface to manifest itself earlier in the life cycle of the product.



ANTIMICROBIAL



ANTI-STATIC



FLAME
RETARDANT



STAIN
RESISTANT



WATERPROOF



SULFIDE
RESISTANT



REACH
COMPLIANT



INDOOR
OUTDOOR