

VIPER VINTAGE

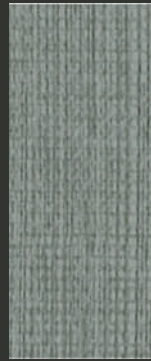
INDOOR - OUTDOOR



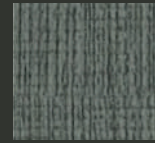
4050 VIPER
BURNING GOLD



2358 VIPER VINTAGE
SOL



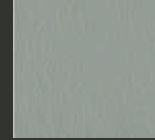
4045 VINTAGE
SILENT STORM



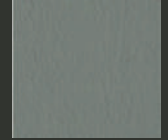
2365 VINTAGE
STEEL



2366 VINTAGE
SCHOONER



2316 VIPER
PLATINUM



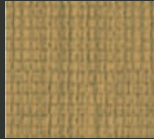
2320 VIPER
MORTAR



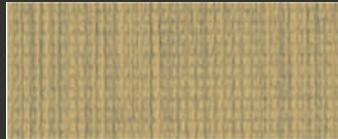
2355 VINTAGE
ERMINE



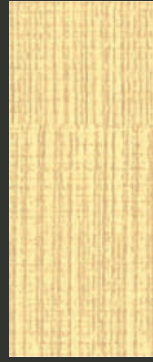
4042 VIPER VINTAGE
SILVER ECHO



2363 VINTAGE
HONEY



4041 VIPER VINTAGE
PEACH PUDDING



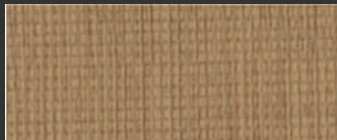
2357 VINTAGE
BUTTERFLY



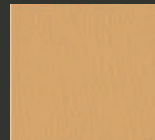
2364 VINTAGE
ALOE



2367 VINTAGE
PARROT



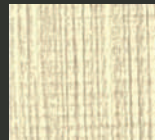
4040 VIPER VINTAGE
LAZY SUMMER



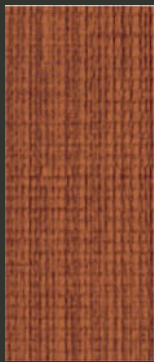
4054 VIPER
FOREVER FAIRYTALE



4043 VINTAGE
WHIPPET



2356 VINTAGE
OYSTER



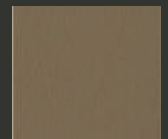
2361 VINTAGE
PAPRIKA



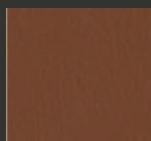
2360 VIPER VINTAGE
TANGERINE



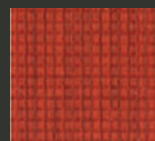
2359 VIPER VINTAGE
SEPIA



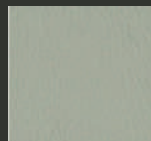
2345 VIPER
PRALINE



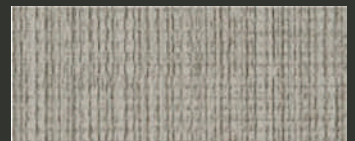
2348 VIPER
CURRY



2362 VINTAGE
VALENTINE



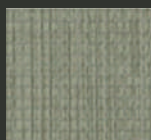
2436 VIPER
LONDON FOG



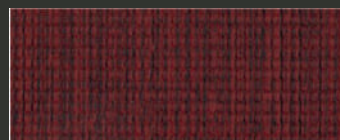
4044 VIPER VINTAGE
MILK POWDER



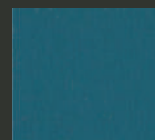
4046 VINTAGE
CUPPA COFFEE



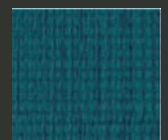
4047 VINTAGE
OLIVE TINT



4048 VIPER VINTAGE
PLUM COCKTAIL



4056 VIPER
NEGRIL SEA



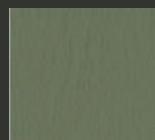
4049 VINTAGE
CARIBBEAN SPLASH



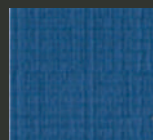
2437 VIPER
ROCK RIDGE



4047 VINTAGE
OLIVE TINT



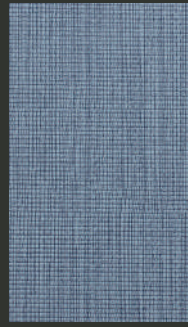
2323 VIPER
BONSAI



2369 VINTAGE
AZURITE



2368 VIPER VINTAGE
NILE



CHARACTERISTICS INDOOR - OUTDOOR

Composition:	Topcoat :Vinyl
Backing:	100% Polyester
Weight:	695 gr/m ²
Roll Width:	min. 137 cm
Roll Length:	+/- 27,4 m
Abrasion:	>300.000 cycles (MARTINDALE)
Cold Crack:	-32 °C
UV-Resistance:	ASTM G153-00a, Cycle 1, 1000 hours, UV co-efficient ≥7 (Blue Wool Scale)
Flame retardancy*:	EU EN 1021 Part 1 & 2 EU IMO MSC 88/26/ADD. 2 Part 8 3.1 & 3.2 (Replacing IMO A652) DE DIN 4102 part 1 (B2) IT UNI ISO 3795 FR NF P 92-503 (M2) US UFAC Class 1 US BIFMA Class A US NFPA 260 US FMVSS 302 US CAL TB 117-2013, Sec. E

*This term and any corresponding data refer to the typical performance in the specific tests indicated and should not be construed to imply the behaviour of this or any other material under actual fire conditions.

FINISHES AND TREATMENTS

PHthalate  FREE

EN 71-3:2019 Migration of Certain Elements (Category III)

Bacteriostatic Properties: Mildew Resistant

SUSTAINABILITY

Bromine-free, no Halogenated Flame Retardants (HFRs)
No Bisphenol (BPA)
No Ozone Depleting Chemicals
No PBTs (Persistent Bio accumulative and Toxic Chemicals)
Contains bio-based renewable ingredients
26P Phthalate Free
REACH
RoHS

SAMPLES AND ENQUIRES

samples: samples@vyvafabrics.nl | orders: info@vyvafabrics.nl

CARE AND CLEANING

For optimum care and cleaning please read the following instructions and recommendations.

Disinfectant Use

Here is a helpful list of products that you can use to disinfect:

Clorox® Hydrogen Peroxide Disinfecting Cleaner,

This kills bacteria and viruses in 30 seconds.

BLEACH-RITE® Disinfecting Spray with Bleach, Current Technologies
This is a hospital-grade pre-mixed cleaner with bleach diluted 1:10.

Dispatch® Hospital Cleaner Disinfectant Towels with Bleach

This kills most bacteria and viruses in 1 minute.

Bleach, Dilute the bleach up to a 1:10 ratio (10%). Liberally apply diluted bleach solution using a sponge. Rinse with cold water several times.

Wipe dry. Be sure to follow the guidelines on the bleach label.

Isopropyl Alcohol with concentration of around 70% can kill corona-viruses. Leave the 70% Isopropyl Alcohol solution on the product for one minute.

Hydrogen Peroxide with a 3% concentration can be used to disinfect.

Apply to the product and allow to sit for one minute.

Rinse the area with clean water, then dry with a clean, lint-free cloth after using any disinfectants and cleaners.

Cleaning after Disinfection:

The coated fabric should be cleaned periodically in order to maintain its appearance and prevent build-up of dirt and contaminants. Any stain, spills, or soiling should be cleaned up immediately to prevent the possibility of permanent staining.

Use a mixture of 1:1 liquid soap (neutral pH) and water or our approved cleaning products for coated fabrics to remove stains on the surface of the material. Completely remove excess cleaner with a white, clean, damp cloth; and dry the surfaces afterwards. Lacquers, strong cleaners, detergents, xylene-based solutions, acetone, or ketone (MEK) cause immediate damage and contribute to the deterioration of the material. The use of such cleaners is at the owner's risk.

Cleaning methods to remove tougher stains

Step 1: Coffee, juice, red wine, sauces, chocolate, grease, crayon and suntan lotion. Remove excess spill with a damp cloth. Clean with a 1:1 mix of neutral liquid soap and water. Next, rinse with clean water and dry.

Step 2: Make-up. Use a straight application of neutral PH soap. Wipe with a clean white cloth or soft brush, rinse with clean water, and dry.

Step 3: Blood, urine, faeces and all other tough stains. Use a 1:10 mix of Isopropyl alcohol and water. Rinse thoroughly with clean water and dry.

For cleaning: use a soft white cotton cloth saturated with the recommended cleaning agent and rub the stain in random circles, ten times or more. Pat dry with another soft white cotton cloth and check the results. Do not use steel bristle brushes, abrasive scouring pads or metal, these cause permanent damage to the fabric. Methods 2 & 3 are not recommended for everyday cleaning! After cleaning, rinse the area with clean water, then dry with a clean, lint-free cloth. Failure to remove chemical residue will cause discolouration of the coated fabric surface to manifest itself earlier in the life cycle of the product.

