

INDOOR - OUTDOOR

Hemp Wavy

made from 75% sustainable hemp yarn



BECAUSE NATURE
NEEDS ALL OF US



INDOOR - OUTDOOR



CHARACTERISTICS	Wavy	Fjord	Spiced	Flora
Composition:	75% Hemp / 25% PL HUV	33% Hemp / 67% PL HUV	30% Hemp / 70% PL HUV	45% Hemp / 55% PL HUV
Weight:	456 gr/m ²	300 gr/m ²	486 gr/m ²	460 gr/m ²
Roll Width:	min. 138 cm	min. 140 cm	min. 140 cm	min. 140 cm
Roll Length:	+/- 25 m	+/- 20 - 25 m	+/- 20 - 25 m	+/- 20 - 25 m
Abrasion: (Martindale)	>24.000 cycles	>20.000 cycles	>10.000 cycles	>35.000 cycles
Colour fastness to		Colour fastness to		
Light:	7 (ISO 105-B02) 1-8 Blue Wool Scale	Light:	6/7 (ISO 105-B04) 1-8 Blue Wool Scale	
Light:	6/7 (ISO 105-B04) 1-8 Blue Wool Scale	Rubbing (dry):	4/5 (ISO 105-X12) 1-5 Grey Scale	
Rubbing (dry):	5 (ISO 105-X12) 1-5 Grey Scale	Rubbing (wet):	3 (ISO 105-X12) 1-5 Grey Scale	
Rubbing (wet):	4/5 (ISO 105-X12) 1-5 Grey Scale	Chlorinate:	4/5 (ISO 105-E03) 2010	
Seawater:	5 (ISO 105-E02) 1996			
Chlorinate:	5 (ISO 105-E03) 2010	Pilling:	4 (ISO 12445-2) 2002	
Pilling:	4/5 (ISO 12445-2) 2002			
Seam slippage		Dry clean fastness: Colour change 4-5 (ISO D01) 1995		
Width:	5 mm (ISO 13936-2)			
Length:	2 mm (ISO 13936-2)			
SUSTAINABILITY	Special "ECO" treatment: waterproof and stainless The Hemp Collection fabrics are treated with a special "ECO" finish, the raw fabric is first washed to remove any kind of wax and oil with a natural soap, extracted from lemon fermentation. A special silicone high concentration treatment is then applied, to create an invisible surface layer with a molecular structure 2000 times smaller than water, which gives mechanical waterproofing to the fabric surface, like water drops dancing on much smaller spheres that do not allow penetration through the fabric. The "ECO" treatment is PFOA free, resistant to wash, safe for skin contact and respectful of the environment.			
Made from 75% sustainable hemp yarn				
No chemicals were used				
Reach				

CARE AND CLEANING          

For optimum care and cleaning please read the following instructions and recommendations.

Cleaning instructions

Brush off dirt before it becomes embedded in the fabrics and wipe up spills or clean quickly after a stain appears. The quicker you clean spills and stains, the easier they can be removed.

Fabric can be spot washed by sponging briskly with a soapy solution of natural soap in lukewarm water. Rinse thoroughly and allow to air dry.

SAMPLES AND ENQUIRES

samples: samples@vyvafabrics.nl | orders: info@vyvafabrics.nl



SOFT



OEKO-TEX®
STANDARD 100



NATURAL
PRODUCT



SOLAR
ENDURANCE



WATER
RESISTANT



INDOOR
OUTDOOR



REACH
COMPLIANT



30 DEGREE
WASH

INFO@VYVAFABRICS.NL

WWW.VYVAFABRICS.NL

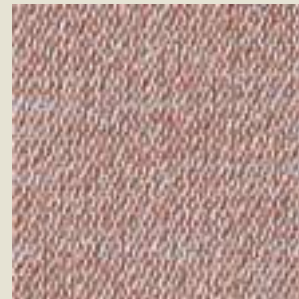
TEL +31 (0)20 6599523



7114
WAVY OLD ROSE



771-08
FJORD RED CLAY



771-37
FJORD FAWN



7108
WAVY BLUSH



7109
WAVY SWEET ORANGE



771-31
FJORD SHELL



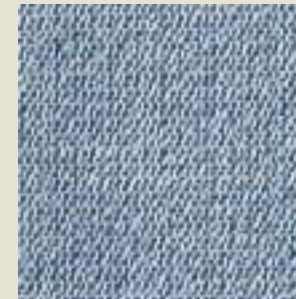
7107
WAVY BEACH



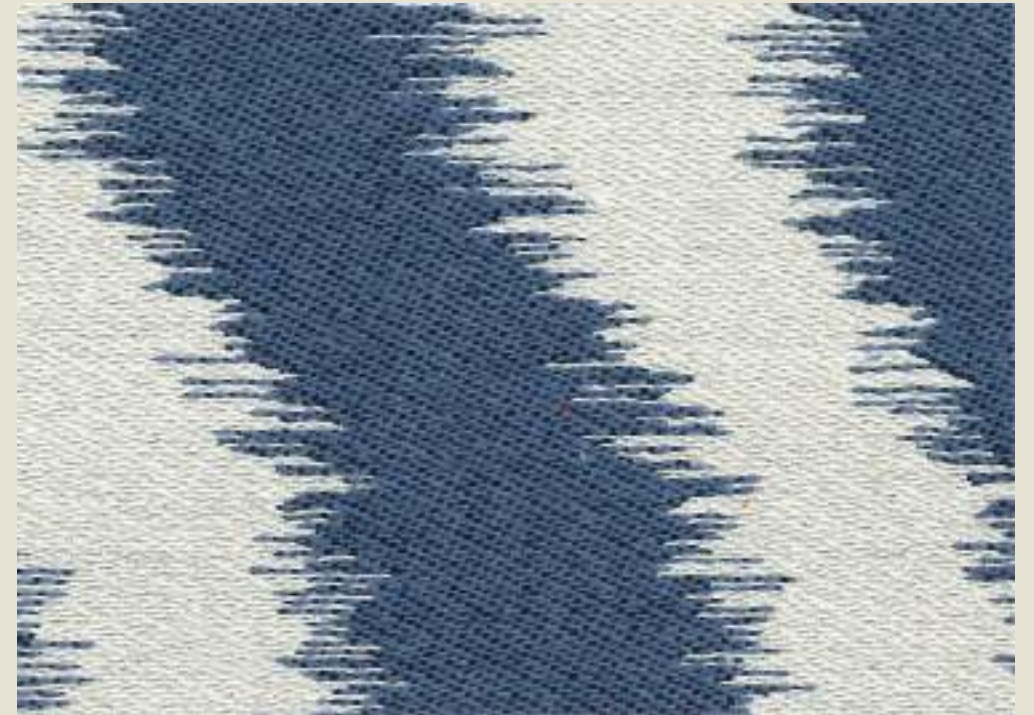
7113
WAVY MISTY GREY



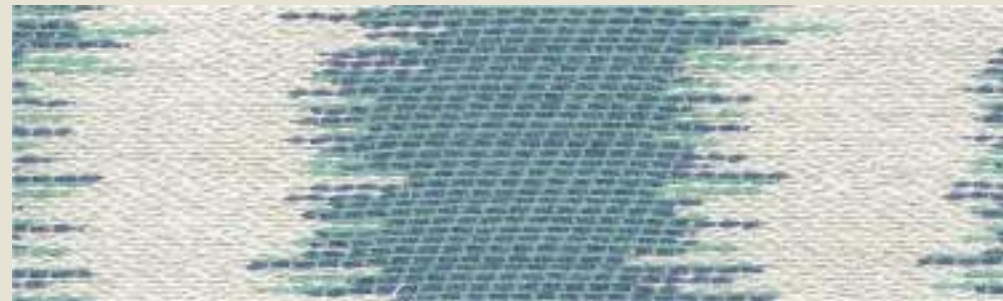
770-09
SPICED JUNIPER



771-39
FJORD WATERFALL



7115
WAVY MARINE



7112
WAVY WATERFALL



772-34
FLORA DAHLIA



7110
WAVY PERIDOT



7111
WAVY FERN GREEN