

AGUA

PERFORMANCE UPHOLSTERY FABRICS

Tones Collection

A soft indoor upholstery fabric designed to look like wool



Tones Collection | v.33.1



Anti-Microbial



Bleach Cleanable



Fire Retardant
Crib 5/IMO



Stain Resistant



Waterproof



Martindale Abrasion
Severe Contract



Phthalate Free



REACH Compliant

Tones

Soft indoor upholstery fabric with the look of a traditional wool fabric.

Perfect for:

Commercial, cruise, hospitality, leisure and senior living

Fabric Specifications

Flame retardant	BS7176 Crib 5, BS EN 1021-1:2006 1&2, BS5852 Crib 5, IMO Annex 1 Part 8.
Anti-bacterial/Anti-fungal	Resistant to microbial or fungal growth including Salmonella, E Coli and MRSA.
Waterproof	Hydrostatic Head BS3424 > 1 metre.
Martindale	Severe Contract > 100,000.
Stain resistant	Excellent stain removal has been observed for grease, ink, blood, urine, coffee, iodine, betadine, ketchup, chewing gum, chocolate, grape juice.
Composition	100% Treated polyester.
Breathable	Moisture vapour permeable.
Width	140cm (55") wide.

Technical Information

- We recommend a minimum of 32 stitches per 10 cm (8 stitches per inch) and seams must have a minimum 12mm (0.5") bite on the fabric.
- Not suitable for use as removable loose covers.
- Please note that all fabric offered is subject to minor tolerance in respect of shade and other slight variations.
- Technical specifications may be amended, please check for the latest information.
- Please ask if you require a sample of the current batch available but be aware that stock can move quickly.
- Tones can be colour co-ordinated with Agua faux leather collections to produce stunning furniture with dual textured finishes.
- Bespoke colours can be produced subject to minimum quantity orders.

Fabric Care

- Use a vacuum cleaner or soft brush to remove dust and solid particles.
- Always try cleaning products on a hidden piece of fabric to test suitability.
- Wipe frequently with a damp cloth to maintain the appearance of the fabric.
- All spillages should be removed immediately with a clean absorbent cloth.
- Poorly fixed clothing dyes, e.g. Denim, will cause permanent staining. Most stains can be removed using cold/warm water and a clean microfibre cloth.
- Stains from products containing oil and grease should be treated with a spirit based solution.
- Can be steam cleaned in situ.
- Can be cleaned with mild Hypochlorite solutions (up to 10,000 ppm of available chlorine - including Haz Tabs and Chlor-Clean) or Mineral Spirit for infection control purposes.
- If soap based cleaners are used, all soap residues must be rinsed from the fabric.
- Do not machine wash or dry clean.
- Remove all stains immediately before they set.
- Please refer to the Tones Fabric Technical Specifications PDF download on the Agua website for further details.
- Do not use solvents, chemical agents, waxes or polishes as this will damage the surface of the fabric.

Our Environmental Policy

Our products have always been phthalate free and Reach* compliant. Our processes are non-toxic and the methods used during manufacture and finishing ensure that potentially hazardous accidental cross contamination is minimised to the greatest degree possible. All our fabrics meet the stringent Oeko-Tex**

standards, regardless of origin, so are free from harmful chemicals and safe for human use.

* Registration, Evaluation, Authorisation and Restriction of Chemicals (EU regulation: 18th December 2006)

** See more: www.oeko-tex.com

Samples and Enquires

You can contact us for samples, order enquiries or information about any of our fabric ranges here:

Vyva Fabrics

TT. Vasumweg 140
1033 SH Amsterdam, The Netherlands
Tel +31(0)20-6599523 info@vyvafabrics.nl
samples@vyvafabrics.nl www.vyvafabrics.nl



Certificate No. FS 531220



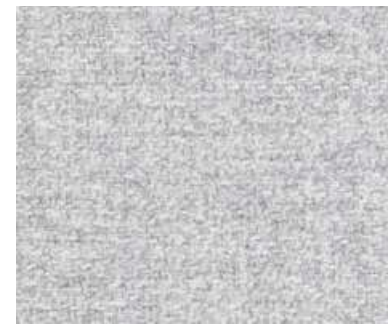
PERFORMANCE UPHOLSTERY FABRICS



Tones Pebble



Tones Sky



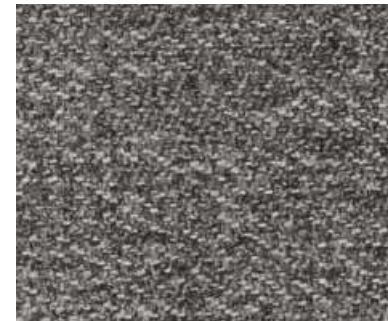
Tones Silver



Tones Latte



Tones Marine



Tones Pewter



Tones Mink



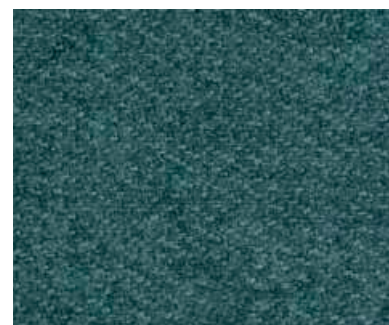
Tones Petrol



Tones Steel



Tones Truffle



Tones Forest



Tones Lead



Tones Raven



Tones Sapphire



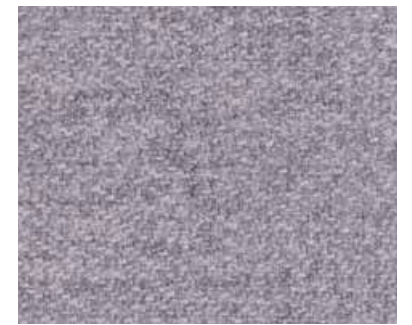
Tones Graphite



Tones Gold



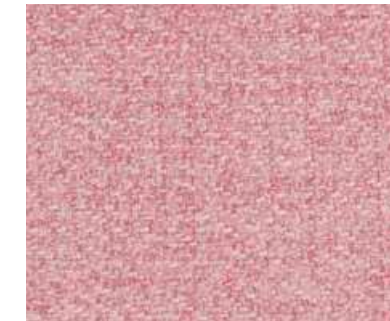
Tones Old Rose



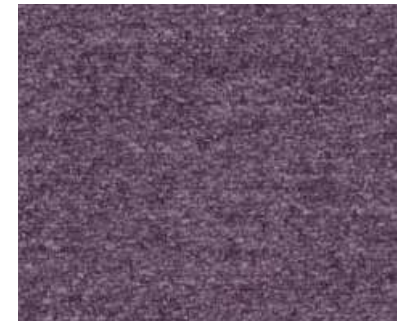
Tones Pearl



Tones Mustard



Tones Orchid



Tones Lilac



Tones Terracotta



Tones Wine



Tones Thistle



Tones Brick



Tones Claret



Tones Aubergine



Tones Tomato



Tones Cherry



Tones Olive