

AGUA

PERFORMANCE UPHOLSTERY FABRICS

Parody Collection

Fabric style faux leather
for indoor upholstery

Parody

Fabric style faux leather ideal for interior upholstery

Perfect for:

Commercial, cruise, healthcare, hospitality and leisure.

Fabric Specifications

Flame retardant	BS7176 Crib 5, BS EN 1021-1:2006 1&2, BS5852 Crib 5, IMO Annex 1 Part 8.
Anti-bacterial/Anti-fungal	Resistant to microbial or fungal growth including Salmonella, E Coli and MRSA.
Waterproof	Hydrostatic Head BS3424 > 1 metre.
Martindale	Severe Contract > 100,000.
Stain resistant	Excellent stain removal has been observed for grease, ink, blood, urine, coffee, iodine, betadine, ketchup, chewing gum, chocolate, grape juice.
Composition	Weave - 2% Vinyl Acrylic, 74% PVC, 12% Polyester, 12% Cotton. Denim - 70% PVC, 30% Cotton. Ocular - 2% Vinyl Acrylic, 74% PVC, 8% Cotton, 16% Polyester.
Width	140cm (55") wide.
Weight	Denim - 650g ±5%. Weave & Ocular - 750g ±5%.

Technical Information

- We recommend a minimum of 32 stitches per 10 cm (8 stitches per inch) and seams must have a minimum 12mm (0.5") bite on the fabric.
- Parody can be colour co-ordinated with other Agua collections to produce stunning dual textured finishes.
- Please note that all fabric offered is subject to minor tolerance in respect of shade and other slight variations.
- Can be stitched, tacked and glued. Cannot be heat welded.
- Bespoke colours can be produced subject to minimum quantity orders.
- Technical specifications may be amended, please check for the latest information.
- Please ask if you require a sample of the current batch available but be aware that stock can move quickly.

Fabric Care

- Poorly fixed clothing dyes, e.g. denim, will cause permanent staining. Most stains can be removed using cold/warm water and a clean microfibre cloth.
- Use a vacuum cleaner or soft brush to remove dust and solid particles.
- Wipe frequently with a damp cloth to maintain the appearance of the fabric.
- Remove all stains immediately before they set. All spillages should be removed immediately with a clean absorbent cloth.
- If soap based cleaners are used, all soap residues must be rinsed from the fabric.
- Can be steam cleaned in situ.
- Do not machine wash or dry clean.
- Can be cleaned with mild Hypochlorite solutions (10,000 ppm of available chlorine) e.g.: Haz Tabs, Chlor-Clean. Continued use may cause discolouration and surface damage.
- Always try cleaning products on a hidden piece of fabric to test suitability.
- Do not use: solvents, abrasives, chemical agents, waxes or polishes as this will damage the surface of the fabric.
- Do not use marker pens on the back of the fabric.
- Please refer to the Parody Fabric Technical Specifications PDF download on the Agua website for further details.

Our Environmental Policy

Our products have always been phthalate free and Reach* compliant. Our processes are non-toxic and the methods used during manufacture and finishing ensure that potentially hazardous accidental cross contamination is minimised to the greatest degree possible. All our fabrics meet the stringent Oeko-Tex**

standards, regardless of origin, so are free from harmful chemicals and safe for human use.

* Registration, Evaluation, Authorisation and Restriction of Chemicals (EU regulation: 18th December 2006)
** See more: www.oeko-tex.com

Samples and Enquires

You can contact us for samples, order enquiries or information about any of our fabric ranges here:

Vyva Fabrics

TT. Vasumweg 140
1033 SH Amsterdam, The Netherlands
Tel +31(0)20-6599523 info@vyvafabrics.nl
samples@vyvafabrics.nl www.vyvafabrics.nl



Certificate No. FS 531220

AGUA

PERFORMANCE UPHOLSTERY FABRICS



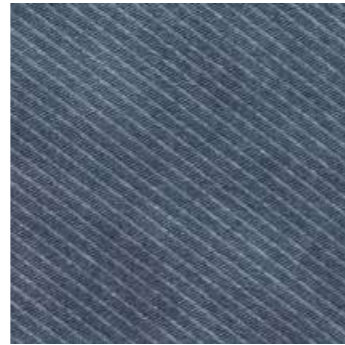
Denim



Parody Denim Sand



Parody Denim Charcoal



Parody Denim Ocean

Ocular



Parody Ocular Driftwood



Parody Ocular Bark



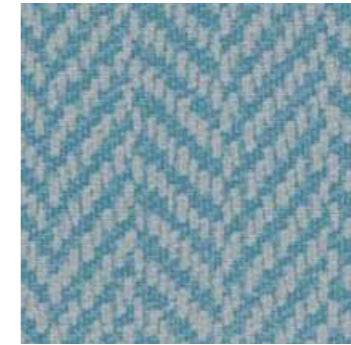
Parody Ocular Ebony

Weave

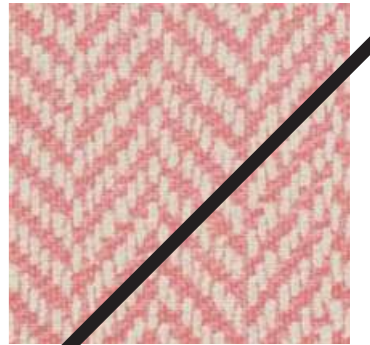
Discontinued



Parody Weave Oatmeal



Parody Weave Sea Grass



Parody Weave Candy



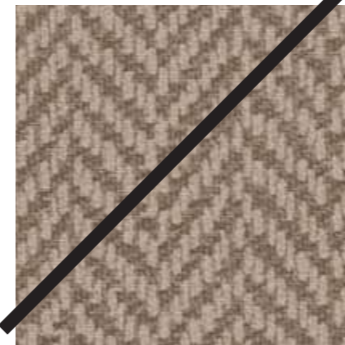
Parody Weave Coffee



Parody Weave Orion



Parody Weave Crocus



Parody Weave Olive



Parody Weave Charcoal