

# Hemp Collection

## Colours

Contact with nature is the inspiration for this new fabric.



**BECAUSE NATURE  
NEEDS ALL OF US**



### CHARACTERISTICS

	Composition	Weight +/- 5%	Roll Width +/- 5%	Roll Length
Fjord:	33% HEMP (CA) / 67% PL HUV	300 g/m <sup>2</sup>	140 cm +/- 3%	20 - 25 m
Spiced:	30% HEMP (CA) / 70% PL HUV	486 g/m <sup>2</sup>	140 cm +/- 3%	20 - 25 m
Flora:	45% HEMP (CA) / 55% PL HUV	460 g/m <sup>2</sup>	140 cm +/- 3%	20 - 25 m
Hortus:	35% HEMP (CA) / 65% PL HUV	524 g/m <sup>2</sup>	140 cm +/- 3%	20 - 25 m
Botanic:	51% HEMP (CA) / 49% PL HUV	411 g/m <sup>2</sup>	140 cm +/- 3%	20 - 25 m

Spiced pattern repeat:	Warp 1,5 cm	Weft 1,1 cm
Hortus pattern repeat:	Warp 3,9 cm	Weft 3,7 cm
Botanic pattern repeat:	Warp 4,2,5 cm	Weft 3,2,5 cm

Fjord, Spiced, Flora, Hortus:	Pilling: Grade 4 (change at 5000 turns) UNI EN ISO 12945-2:2002
Botanic:	Grade 3/4 (change at 5000 turns) UNI EN ISO 12945-2:2002

Dry clean Fastness:	Colour change 4-5 UNI EN ISO D01:1995
---------------------	---------------------------------------

Rub Fastness:	Dry 4-5 / Wet 3 UNI EN ISO 105-X12:1995
---------------	---

Light Fastness Weathering:	Light Colour 6 / Medium-Dark Colour 6/7 UNI EN ISO 105-B04 / 00 Weathering
----------------------------	---

Fastness to Chlorinated Water:	4-5 UNI EN ISO 105 E03:2010
--------------------------------	-----------------------------

Treated:	ECO Silicon-Water Repellent-Soil & Stain Resistant <ul style="list-style-type: none"> <li>The Hemp Collection fabrics are treated with a special "ECO" finish; the raw fabric is first washed to remove any kind of wax and oil with a natural soap, extracted from lemon fermentation.</li> <li>A special silicone high concentration treatment is then applied, to create an invisible surface layer with a molecular structure 2000 times smaller than water, which gives mechanical waterproofing to the fabric surface, like water drops dancing on much smaller spheres that do not allow penetration through the fabric.</li> <li>The "ECO" treatment is PFOA free, resistant to wash, safe for skin contact and respectful of the environment.</li> </ul>
----------	--

Sustainability:	Reach / PFOA Free / ECO treatment
-----------------	-----------------------------------

Flame Retardancy:	US: CAL TB 117-2013
-------------------	---------------------

### CARE AND CLEANING

For optimum care and cleaning please read the following instructions and recommendations.

#### Cleaning instructions

Brush off dirt before it becomes embedded in the fabrics and wipe up spills or clean quickly after a stain appears. The quicker you clean spills and stains, the easier they can be removed.

Fabric can be spot washed by sponging briskly with a soapy solution of natural soap in lukewarm water. Rinse thoroughly and allow to air dry.

### SAMPLES AND ENQUIRES

samples: [samples@vyvafabrics.nl](mailto:samples@vyvafabrics.nl) | orders: [info@vyvafabrics.nl](mailto:info@vyvafabrics.nl)



INFO@VYVAFABRICS.NL | WWW.VYVAFABRICS.NL | TEL +31 (0)20 6599523



770-07 SPICED PAPRIKA



773-30 HORTUS HAZEL



772-03 FLORA HOLLYHOCK



771-37 FJORD FAWN



771-07 FJORD AUTUMN LEAF



772-32 FLORA BARBERTON



770-37 SPICED CHIPOTLE



774-37 BOTANIC MAPLE



771-04 FJORD LAGOON



774-35 BOTANIC RAVEN



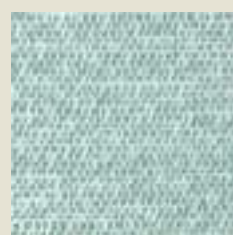
770-05 SPICED TARRAGON



772-06 FLORA PHLOX



773-31 HORTUS PERIDOT



771-34 FJORD SEAMIST



771-05 FJORD LAVA



770-04 SPICED GARDAMON

774-34 BOTANIC LAUREL

772-34 FLORA DAHLIA

771-04 FJORD LAGOON

773-00 HORTUS MEADOW



770-39 SPICED BILBERRY



774-39 BOTANIC OCEANUS



771-09 FJORD OCEAN DENIM



772-36 FLORA FORGET-ME-NOT



771-39 FJORD WATERFALL



772-02 FLORA BACHELOR'S BUTTON



770-09 SPICED JUNIPER



770-08 SPICED CHILI



774-38 BOTANIC RUBY



773-34 HORTUS TOPAZ



773-36 HORTUS CINNABAR



770-38 SPICED CAYENNE



772-35 FLORA ANEMONE



771-08 FJORD RED CLAY