

Hemp Collection Naturals

Contact with nature is the inspiration for this new fabric.



**BECAUSE NATURE
NEEDS ALL OF US**



CHARACTERISTICS

	Composition	Weight +/- 5%	Roll Width +/- 5%	Roll Length
Fjord:	33% HEMP (CA) / 67% PL HUV	300 g/m ²	140 cm +/- 3%	20 - 25 m
Spiced:	30% HEMP (CA) / 70% PL HUV	486 g/m ²	140 cm +/- 3%	20 - 25 m
Flora:	45% HEMP (CA) / 55% PL HUV	460 g/m ²	140 cm +/- 3%	20 - 25 m
Hortus:	35% HEMP (CA) / 65% PL HUV	524 g/m ²	140 cm +/- 3%	20 - 25 m
Botanic:	51% HEMP (CA) / 49% PL HUV	411 g/m ²	140 cm +/- 3%	20 - 25 m

Spiced pattern repeat:	Warp 1,5 cm	Weft 1,1 cm
Hortus pattern repeat:	Warp 3,9 cm	Weft 3,7 cm
Botanic pattern repeat:	Warp 4,2,5 cm	Weft 3,2,5 cm

Fjord, Spiced, Flora, Hortus:	Pilling: Grade 4 (change at 5000 turns) UNI EN ISO 12945-2:2002
Botanic:	Grade 3/4 (change at 5000 turns) UNI EN ISO 12945-2:2002

Dry clean Fastness:	Colour change 4-5 UNI EN ISO D01:1995
---------------------	---------------------------------------

Rub Fastness:	Dry 4-5 / Wet 3 UNI EN ISO 105-X12:1995
---------------	---

Light Fastness Weathering:	Light Colour 6 / Medium-Dark Colour 6/7 UNI EN ISO 105-B04 / 00 Weathering
----------------------------	---

Fastness to Chlorinated Water:	4-5 UNI EN ISO 105 E03:2010
--------------------------------	-----------------------------

Treated:	ECO Silicon-Water Repellent-Soil & Stain Resistant <ul style="list-style-type: none"> The Hemp Collection fabrics are treated with a special "ECO" finish; the raw fabric is first washed to remove any kind of wax and oil with a natural soap, extracted from lemon fermentation. A special silicone high concentration treatment is then applied, to create an invisible surface layer with a molecular structure 2000 times smaller than water, which gives mechanical waterproofing to the fabric surface, like water drops dancing on much smaller spheres that do not allow penetration through the fabric. The "ECO" treatment is PFOA free, resistant to wash, safe for skin contact and respectful of the environment.
----------	--

Sustainability:	Reach / PFOA Free / ECO treatment
-----------------	-----------------------------------

Flame Retardancy:	US: CAL TB 117-2013
-------------------	---------------------

CARE AND CLEANING

For optimum care and cleaning please read the following instructions and recommendations.

Cleaning instructions

Brush off dirt before it becomes embedded in the fabrics and wipe up spills or clean quickly after a stain appears. The quicker you clean spills and stains, the easier they can be removed.

Fabric can be spot washed by sponging briskly with a soapy solution of natural soap in lukewarm water. Rinse thoroughly and allow to air dry.

SAMPLES AND ENQUIRES

samples: samples@vyvafabrics.nl | orders: info@vyvafabrics.nl





771-36 FJORD HAWKE



774-36 BOTANIC SIERRA



771-30 FJORD SNOWFLAKE



770-36 SPICED GINGER



771-31 FJORD SHELL



770-06 SPICED CINNAMON



771-01 FJORD SHORE



770-31 SPICED NUTMEG



772-33 FLORA MUMS



770-01 SPICED CUMIN



772-31 FLORA LILY



771-06 FJORD WOODBINE



772-04 FLORA BLACK-EYED SUSAN



773-35 HORTUS BRONZITE



774-31 BOTANIC SAND

771-31 FJORD SHELL

770-31 SPICED NUTMEG

771-30 FJORD SNOWFLAKE

772-31 FLORA LILY



771-32 FJORD FROST



774-32 BOTANIC SILVER



770-32 SPICED SUNFLOWER SEED



772-30 FLORA POMPOM



773-32 HORTUS SAVANNE



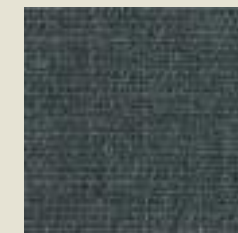
771-00 FJORD GREY MIST



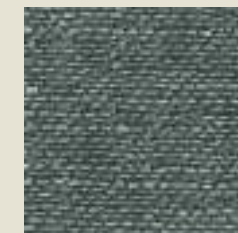
771-02 FJORD ROCK



770-33 SPICED POPPYSEED



771-03 FJORD VULCANO



770-02 SPICED PEPPERCORN



770-03 SPICED SESAME



772-00 FLORA SILVERBABY



774-33 BOTANIC RIDGE



772-01 FLORA BLACK ORCHID