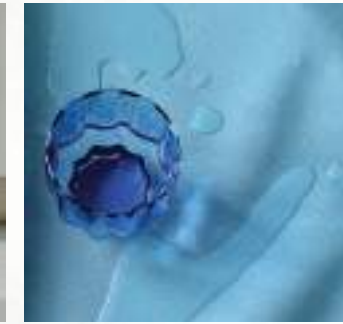


# Econic

75% sustainable product content  
contains recycled, biobased and renewable ingredients



**BECAUSE NATURE  
NEEDS ALL OF US**



## CHARACTERISTICS

CHARACTERISTICS	INDOOR - OUTDOOR
Composition:	Topcoat: Bio-based Vinyl
Back-ing:	100% Recycled Polyester
Weight:	678 gr/m <sup>2</sup>
Roll Width:	min. 137 cm
Roll Length:	+/- 27,40 m
Abrasion:	>300.000 cycles (MARTINDALE)
Cold Crack:	-32 °C
UV-Resistance:	≥ 7 ISO 105-B02 (Blue Wool Scale)
Flame retardancy*:	EU EN 1021 Part 1 & 2 EU BS5852 Source 0,1 (Cigarette & Match) US CAL TB 117-2013 US California AB 2998 Compliant

\*This term and any corresponding data refer to the typical performance in the specific tests indicated and should not be construed to imply the behaviour of this or any other material under actual fire conditions

## FINISHES AND TREATMENTS

EN 71-3:2011 Migration of Certain Elements (Category III)  
Bacteriostatic Properties: Mildew Resistant



## SUSTAINABILITY

- Bromine-free, no Halogenated Flame Retardants (HFRs)
- No Bisphenol A (BPA)
- No Ozone Depleting Chemicals
- No PBTs (Persistent Bio accumulative and Toxic Chemicals)
- Contains bio-based renewable ingredients
- Phthalate free formulation
- Skin Safe (ISO 10993-10)

## REACH

RoHS

75% sustainable product content

- \* Bio-attributed PVC resins; Originating from non-feedstock wood residue such as bark, leaves etc.
- \* Bio-based plasticisers; Derived from used vegetable cooking oils (soya, sunflower etc).
- \* 100% recycled polyester; Backing fabric made from post-consumer PET bottles waste.

## SAMPLES AND ENQUIRES

samples: [samples@vyvafabrics.nl](mailto:samples@vyvafabrics.nl) | orders: [info@vyvafabrics.nl](mailto:info@vyvafabrics.nl)

## CARE AND CLEANING

For optimum care and cleaning please read the following instructions and recommendations.

**Disinfectant Use**  
Here is a helpful list of products that you can use to disinfect:  
Clorox® Hydrogen Peroxide Disinfecting Cleaner, this kills bacteria and viruses in 30 seconds.  
BLEACH-RITE® Disinfecting Spray with Bleach, Current Technologies, this is a hospital-grade pre-mixed cleaner with bleach diluted 1:10.  
Dispatch® Hospital Cleaner Disinfectant Towels with Bleach, this kills most bacteria and viruses in 1 minute.  
Bleach, Dilute the bleach up to a 1:10 ratio (10%). Liberally apply diluted bleach solution using a sponge. Rinse with cold water several times. Wipe dry. Be sure to follow the guidelines on the bleach label.  
Isopropyl Alcohol with concentration of around 70% can kill corona viruses. Leave the 70% Isopropyl Alcohol solution on the product for one minute.  
Hydrogen Peroxide with a 3% concentration can be used to disinfect. Apply to the product and allow to sit for one minute.

Rinse the area with clean water, then dry with a clean, lint-free cloth after using any disinfectants and cleaners.

**Cleaning after Disinfection:**  
The coated fabric should be cleaned periodically in order to maintain its appearance and prevent build-up of dirt and contaminants. Any stain, spills, or soiling should be cleaned up immediately to prevent the possibility of permanent staining.  
Use a mixture of 1:1 liquid soap (neutral pH) and water or our approved cleaning products for coated fabrics to remove stains on the surface of the material. Completely remove excess cleaner with a white, clean, damp cloth, and dry the surfaces afterwards. Lacquers, strong cleaners, detergents, xylene-based solutions, acetone, or ketone (MEK) cause immediate damage and contribute to the deterioration of the material. The use of such cleaners is at the owner's risk.

**Cleaning methods to remove tougher stains**  
Step 1: Coffee, juice, red wine, sauces, chocolate, grease, crayon and suntan lotion. Remove excess spill with a damp cloth. Clean with a 1:1 mix of neutral liquid soap and water. Next, rinse with clean water and dry.

Step 2: Make-up. Use a straight application of neutral PH soap. Wipe with a clean white cloth or soft brush, rinse with clean water, and dry.

Step 3: Blood, urine, faeces and all other tough stains. Use a 1:10 mix of Isopropyl alcohol and water. Rinse thoroughly with clean water and dry.

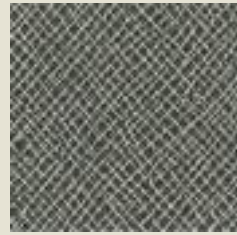
For cleaning: use a soft white cotton cloth saturated with the recommended cleaning agent and rub the stain in random circles, ten times or more. Pat dry with another soft white cotton cloth and check the results. Do not use steel bristle brushes, abrasive scouring pads or metal, these cause permanent damage to the fabric. Methods 2 & 3 are not recommended for everyday cleaning! After cleaning, rinse the area with clean water, then dry with a clean, lint-free cloth. Failure to remove chemical residue will cause discolouration of the coated fabric surface to manifest itself earlier in the life cycle of the product.



INFO@VYVAFABRICS.NL

WWW.VYVAFABRICS.NL

TEL +31 (0)20 6599523



5261  
COCOA WHIP



5257  
MAPLE GLAZE



5262  
DARK CLOVE



5258  
STARDEW



5248  
POTTERSCLAY



5255  
PAINTER'S WHITE



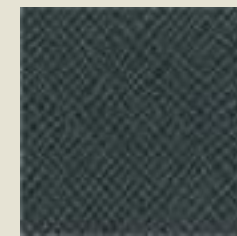
5251  
PIMENTA



5246  
BLANCHED ALMOND



5247  
BURLYWOOD



5260  
BROADWAY



5266  
STRONG IRIS



5249  
FROST



5250  
LIGHT MOSS



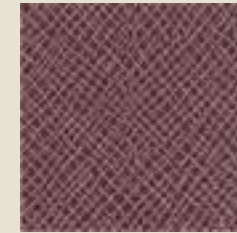
5252  
NOMAD



5267  
CORAL CLAY



5268  
SUNDRIED TOMATO



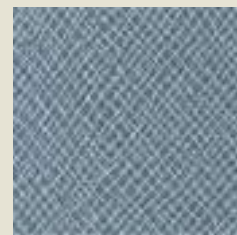
5269  
WILD FLOWER



5263  
OCEAN ABYSS



5254  
VOYAGE



5253  
JEAN JACKET



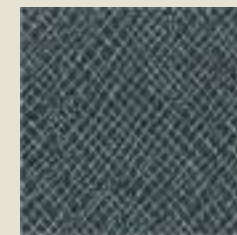
5270  
BUXTON BLUE



5264  
ROCKY HILL



5256  
SUNGOLD



5259  
GRANITE PEAK



5265  
HALE NAVY