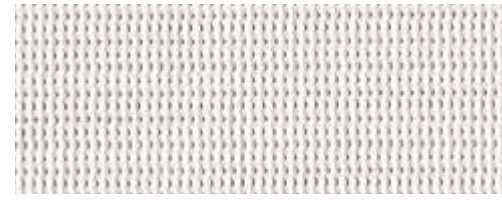




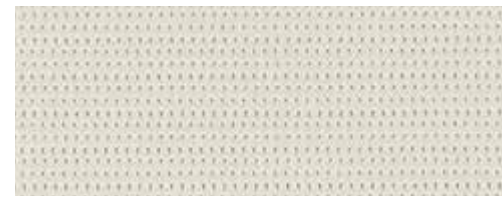
SUNWORKER



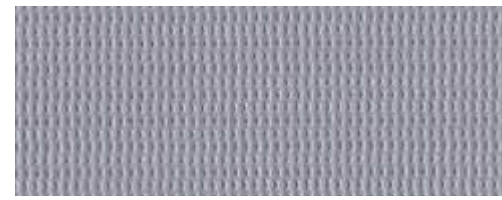
# SWK6



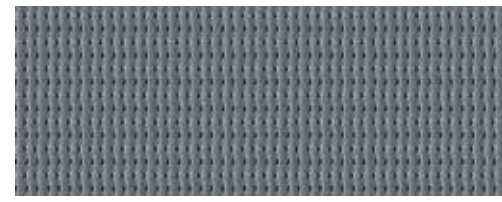
White  
SWK M005 150M1



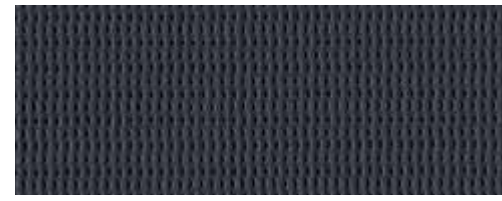
Pearl  
SWK M006 150M1



Silver  
SWK M652 150M1



Storm  
SWK M729 150M1

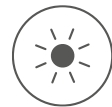


Charcoal  
SWK M392 150M1



Black  
SWK M391 150M1

# SWK15



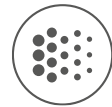
PROTECTS FROM THE  
UV, HEAT & LIGHT  
*Protège des UV, de la  
chaleur et de la lumière*



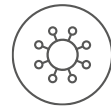
TEAR  
STRENGTH  
*Résiste  
à la déchirure*



BREATHABLE  
COMFORT  
*Respirant*



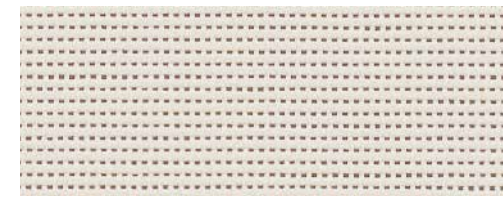
FADE  
RESISTANT  
*Résiste  
à la décoloration*



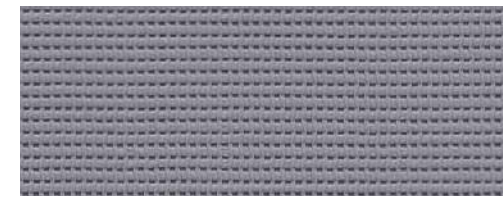
MOLD  
RESISTANT  
*Résiste  
aux moisissures*



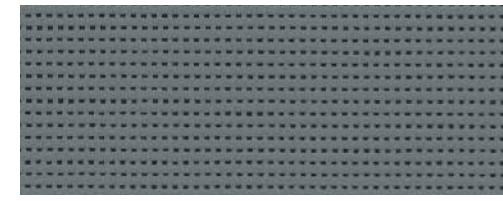
EASY  
TO CLEAN  
*Entretien  
facile*



Pearl  
SWN M006 305



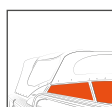
Silver  
SWN M652 305



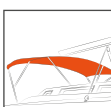
Storm  
SWN M729 305



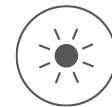
Charcoal  
SWN M392 305



RECOMMENDED  
RECOMMANDE



\* FIXED  
BIMINIS  
ONLY  
BIMINIS  
FIXES  
SEULEMENT



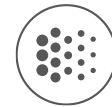
PROTECTS FROM THE  
UV, HEAT & LIGHT  
*Protège des UV, de la  
chaleur et de la lumière*



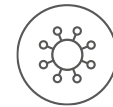
TEAR  
STRENGTH  
*Résiste  
à la déchirure*



BREATHABLE  
COMFORT  
*Respirant*



FADE  
RESISTANT  
*Résiste  
à la décoloration*



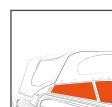
MOLD  
RESISTANT  
*Résiste  
aux moisissures*



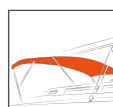
EASY  
TO CLEAN  
*Entretien  
facile*

Thanks to its micro-perforated structure with an opening rate of 6%, the Sunworker SWK6 range lets natural light in, while regulating luminosity and filtering the sun's heat. Woven using the « Rachel Trameur » method, it is extremely resistant to tearing and deformation.

Grâce à sa structure micro-perforée avec un taux d'ouverture à 6%, la gamme Sunworker SWK6 laisse pénétrer la lumière naturelle tout en régulant la luminosité et en filtrant la chaleur du soleil. Tissée selon la méthode du « Rachel Trameur », elle offre une extrême résistance à la déchirure et à la déformation.



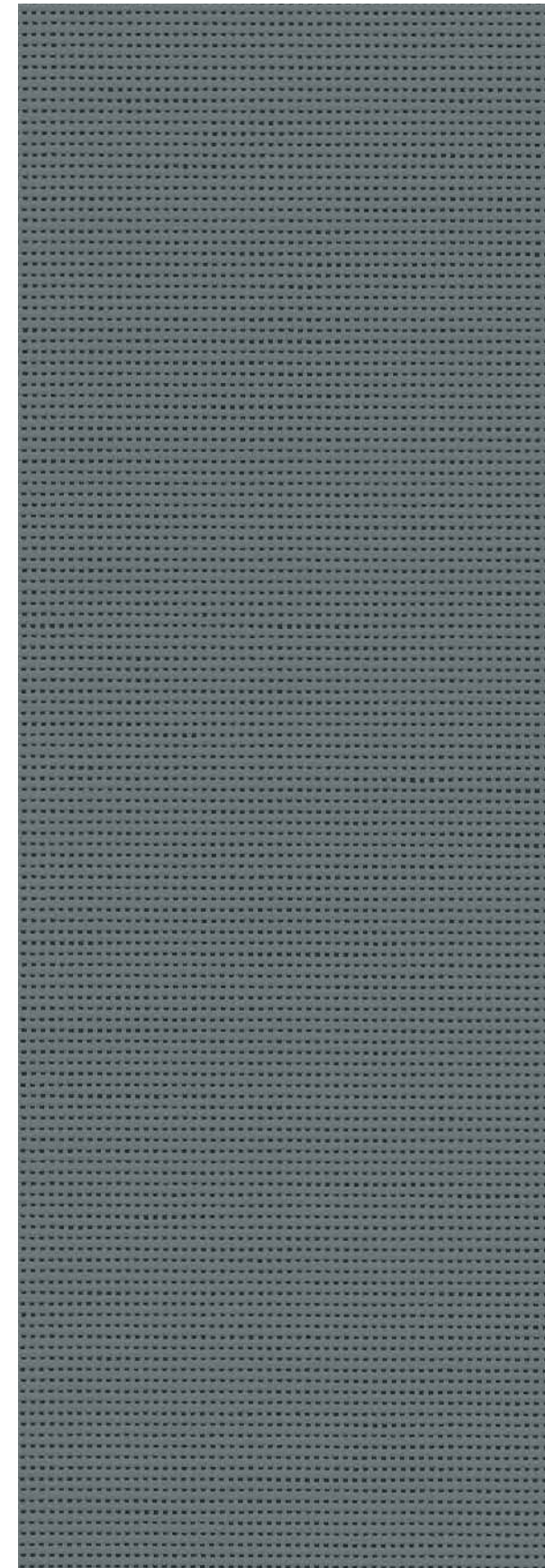
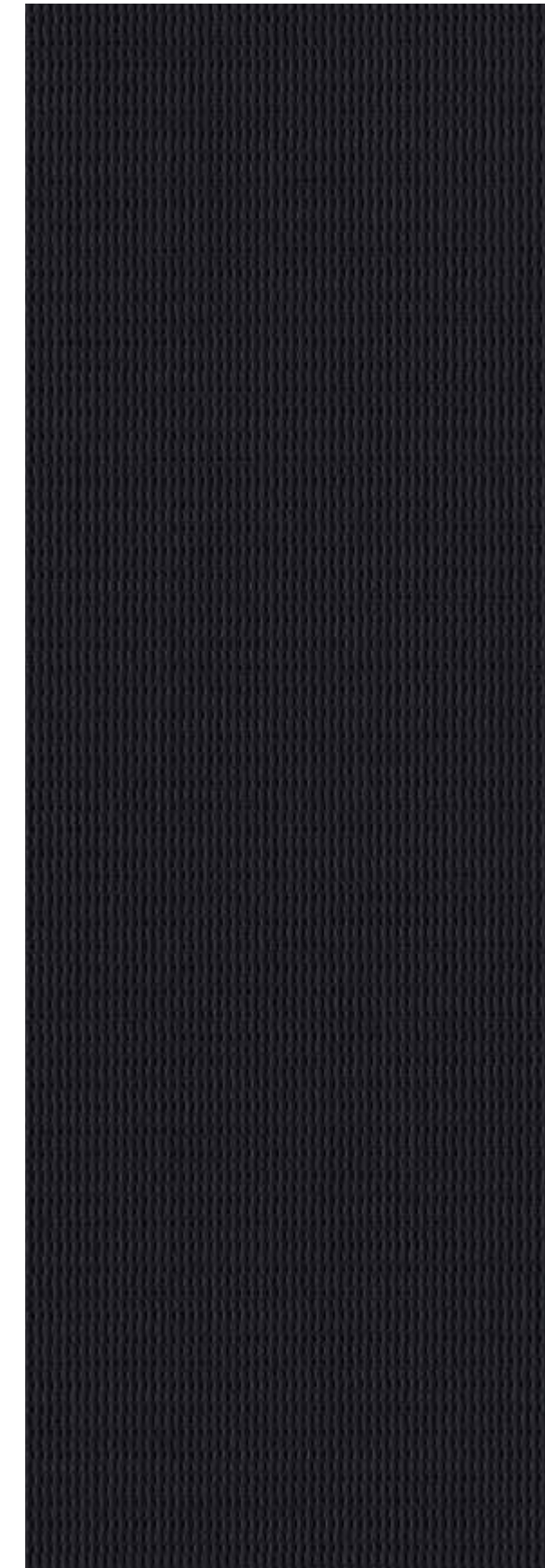
RECOMMENDED  
RECOMMANDE



\* FIXED  
BIMINIS  
ONLY  
BIMINIS  
FIXES  
SEULEMENT

# SWK6

# SWK15





Edition October 2023 - SAS DICKSON CONSTANT - capital 12,640,000 euros - 381 347 970 R.C.S. Lille Métropole - Photos: Nomad Citizen  
Cover picture / photo de couverture: SWK15 Silver M652

|   |   |  |   |
|---|---|--|---|
| <b>SWK6</b>   |   | <b>SWK15</b>                                 |   |
| 50% HIGH TENACITY POLYESTER, 50% PVC<br>50% POLYESTER HAUTE TÉNACITÉ, 50% PVC |   | <b>COMPOSITION</b>                           | 50% HIGH TENACITY POLYESTER, 50% PVC<br>50% POLYESTER HAUTE TÉNACITÉ, 50% PVC |
| BS1D0 (EUROCLASS EN 13501-1), M1 (NF 92503),<br>B1 (DIN 4102), C1 (UNI 9174)  |   | <b>FLAME RETARDANCY</b><br>RÉSISTANCE AU FEU | M2 (NF 92503), B1 (DIN 4102)  |
| 6%  | <b>OPENNESS FACTOR</b><br>FACTEUR D'OUVERTURE                       |  | 15%   |
| 300 G/M <sup>2</sup>  | <b>WEIGHT</b><br>POIDS  |  | 360 G/M <sup>2</sup>  |
| 0,42 MM   | <b>THICKNESS</b><br>ÉPAISSEUR                                       |  | 0,55 MM   |
| 150 CM  | <b>WIDTH</b><br>LAIZE   |  | 305 CM  |
| 60 ML   | <b>ROLL LENGTH - ISO 105 B02</b><br>LONGUEUR DE COUPE - ISO 105 B02 |  | 30 ML   |

Dickson®: french expertise, combining performance and design. We develop exceptional performance fabrics that meet the most demanding standards for interior and exterior design. Dickson is a brand recognised worldwide for its durability and high technical performance.

Dickson®: un savoir-faire français, alliant performance et design. Nous développons des toiles aux performances exceptionnelles qui répondent aux normes les plus exigeantes en matière d'aménagement intérieur et extérieur. Dickson est une marque mondialement reconnue pour sa durabilité et ses hautes performances techniques.

The values of this product may vary depending on a tolerance variation of +/- 5%. We recommend that you do not mix different batches as there might be a slight variation in colour between two productions.

Les valeurs de ce produit peuvent varier selon une tolérance de +/- 5%. Nous vous recommandons de ne pas mélanger différents lots car il peut y avoir une légère variation de couleur entre deux productions.



INDOOR & OUTDOOR  
CONTRACT FURNITURE FABRICS

**VYVA FABRICS**  
TT, VASUNWEG 140  
1033 SH AMSTERDAM THE NETHERLANDS  
TEL +31 (0)20 6599523 INFO@VYVAFABRICS.NL  
WWW.VYVAFABRICS.NL