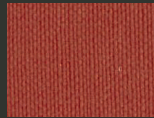
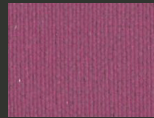


SILVERGUARD

INDOOR - OUTDOOR



SG92012
SUNKIST



SG92097
ORCHID



SG92016
RASPBERRY



SG96004
RUBIN



SG92099
LOTUS



SG94004
ICE



SG92089
WHITE



SG92011
RED



SG97001
AUBERGINE



SG90013
ORANGE



SG91014
UMBER



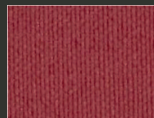
SG92098
ROSE



SG92090
ICECREAM



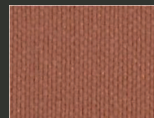
SG91077
CREAM



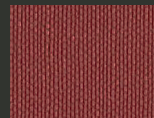
SG97251
GOJI



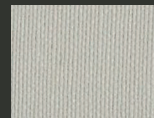
SG96061
MANDARIN



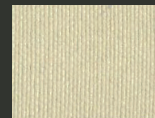
SG99243
BRICK



SG92064
WINE



SG90001
MACADAMIA



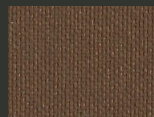
SG91051
SISAL



SG92095
GRENADINE



SG92096
TOMATO



SG90073
LUGGAGE



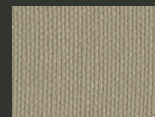
SG92003
COBRE



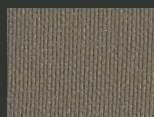
SG92093
SQUASH



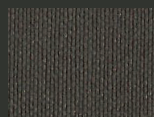
SG90002
SANDSTONE



SG91010
BEIGE



SG94012
SHIITAKE



SG90005
MOCCA



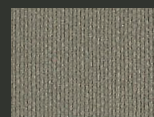
SG96062
MELON



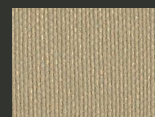
SG96065
SAFRAN



SG92105
CAMEL



SG90009
TAUPE



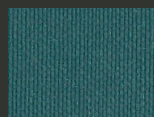
SG91078
CHAMPAGNE



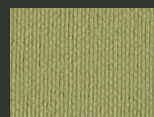
SG93001
TURQUOISE



SG93352
DEEPSEA



SG92100
TEAL



SG95019
CELERY



SG95008
PISTACHO



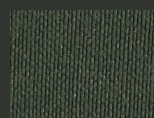
SG92092
AVOCADO



SG93066
BALTIC



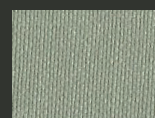
SG95063
FOREST



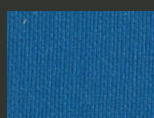
SG95010
BOTTLE



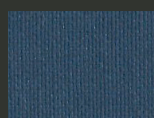
SG95020
BASIL



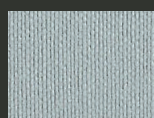
SG95009
SAGE



SG93067
DELFT



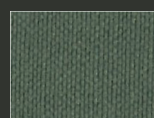
SG93007
SAPPHIRE



SG94001
PLATA



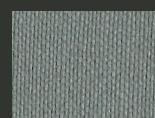
SG95444
JUNGLE



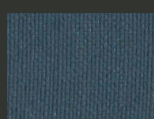
SG95468
HUNTER



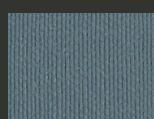
SG94002
STORM



SG94011
STERLING



SG93068
JET



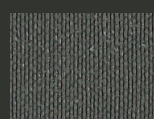
SG92094
PETROL



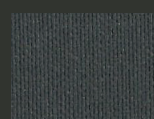
SG95039
SMOG



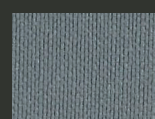
SG96434
MIZZLE



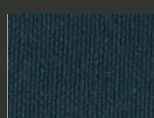
SG94024
METEOR



SG99002
CARBON



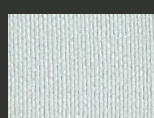
SG94010
TITANIUM



SG93375
WHALE



SG92102
CORAL



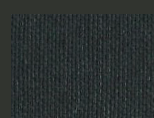
SG92101
ALUMINIUM



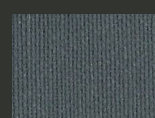
SG92318
WINDY



SG92103
SKYLIGHT



SG99001
BLACK



SG94003
GRAPHITE



CHARACTERISTICS **INDOOR - OUTDOOR**

Composition:	100% Vinyl Urethane
Backing:	100% Polyester Hi-Loft ² ™
Weight:	685 g/m ²
Roll Width:	min. 137 cm
Roll Length:	+/- 30 m
Abrasion Resistance:	>300.000 cycles (MARTINDALE)
Cold Crack:	-29 °C
Light Fastness:	≥7/8 ISO 105-B02 (Blue Wool Scale) ≥4/5 ISO 105-B04 (Grey Scale)
Flame Retardancy*:	EU EN 1021 Part 1 & 2 EU IMO FTP 2010 Code MSC.307 (88) Part 8 3.1 & 3.2 EU ECE R 118.03 (R118.02 Anx 6, 7 & 8) EU (MED) Marine Equipment Directive EU EN 71-2:2006+A1:2007 Safety of Toys - part 2 DE DIN 4102 (B2) IT UNI 9175 (1987) UNI 9175/FA1 (1994) Classe 1.IM FR NF P 92-503 (M2) AT ÖNORM B 3825 Gruppe 1 AT ÖNORM A 3800 Teil 1 UK UKCA US FMVSS 302 US CAL TB 117-2013, Section E US FAR 25/853 US NFPA 260 - Class 1

*This term and any corresponding data refer to the typical performance in the specific tests indicated and should not be construed to imply the behaviour of this or any other material under actual fire conditions.

FINISHES AND TREATMENTS **PERMABLOK³**
ADVANCED VINYL PROTECTION

Antibacterial Protection, Antimycotic Protection, Antifungal Protection, Anti-stain Finish, Mildew resistant backing and face, Sulfide Stain Resistant, Anti-static Finish, EN 71-3 Safety of Toys (Migration of certain elements)

Virucidal Activity: ISO 18184:2019:¹
Coated Fabrics treated with PERMABLOK³ are proven to reduce the presence of Coronavirus** by more than 90% within one hour of contact.

ISO 21702:2019:²
All the Coated fabrics treated with PERMABLOK³ are capable of reducing the Coronavirus** activity by 99.9% within 24 hours of exposure on the surface.

Bacteriostatic Properties: ISO 22196:2011. Value of antibacterial*** activity R>2

SUSTAINABILITY

EcoSense, ISO 14001, ISO 45001, Carbon Neutral, Greenguard, Indoor Air Emissions A+ Certified, Indoor Air Quality Certified, REACH, RoHS

SAMPLES AND ENQUIRES

samples: samples@vyvafabrics.nl | orders: info@vyvafabrics.nl

CARE AND CLEANING      

For optimum care and cleaning please read the following instructions and recommendations.

Disinfectant Use

The following information refers to the performance of PERMABLOK³ products in specific tests, conducted under laboratory conditions. Results may vary under actual conditions:

- Asepticare TB + II • Antifect (in 0.5 % dilution) • Caviwipes XL Packed
- Cleanisept Wipes • Clorox Healthcare Bleach • Germicidal Wipes
- Coverage Plus Germicidal Wipes • Desomed rapid • FD 366
- Hydrogen Peroxide Cleaner Disinfectant Wipes • Instrunet Anionsurf
- Lysol Foaming Disinfectant Cleaner • Microzid • Oxivir TB Wipes
- Oxycide Diluted -3oz/gl in water • PDI Sani-cloth bleach wipes
- Sanicloth AF 3 • Sodium Hypochlorite. Disinfectant. Bletach cleaner. Dilution: 1:10 mix of bleach and water. • Surfanios Premium (in 0,25% dilution) • Surfa'Safe Premium (in 0,25% dilution) • Super Sani-cloth
- Virex II 256 (1:256 Dilution) • Virox 5 Rtu • Wet wipe • Wex Cide 128 (1:128 dilution)

Rinse the area with clean water, then dry with a clean, lint-free cloth after using any disinfectants and cleaners.

Cleaning after Disinfection:

The coated fabric should be cleaned periodically in order to maintain its appearance and prevent build-up of dirt and contaminants. Any stain, spills, or soiling should be cleaned up immediately to prevent the possibility of permanent staining. Use a mixture of 1:1 liquid soap (neutral pH) and water or our approved cleaning products for coated fabrics to remove stains on the surface of the material. Completely remove excess cleaner with a white, clean, damp cloth; and dry the surfaces afterwards. Lacquers, strong cleaners, detergents, xylene-based solutions, acetone, or ketone (MEK) cause immediate damage and contribute to the deterioration of the material. The use of such cleaners is at the owner's risk.

Cleaning methods to remove tougher stains

Step 1: Coffee, juice, red wine, sauces, chocolate, grease, crayon and suntan lotion. Remove excess spill with a damp cloth. Clean with a 1:1 mix of neutral liquid soap and water. Next, rinse with clean water and dry.

Step 2: Make-up Use a straight application of neutral PH soap. Wipe with a clean white cloth or soft brush, rinse with clean water, and dry.

Step 3: Blood, urine, faeces and all other tough stains Use a 1:10 mix of Isopropyl alcohol and water. Rinse thoroughly with clean water and dry.

For cleaning: use a soft white cotton cloth saturated with the recommended cleaning agent and rub the stain in random circles, ten times or more. Pat dry with another soft white cotton cloth and check the results. Do not use steel bristle brushes, abrasive scouring pads or metal, these cause permanent damage to the fabric. Methods 2 & 3 are not recommended for everyday cleaning! After cleaning, rinse the area with clean water, then dry with a clean, lint-free cloth. Failure to remove chemical residue will cause discolouration of the coated fabric surface to manifest itself earlier in the life cycle of the product.



ANTIMICROBIAL



ANTI-STATIC



FLAME RETARDANT



STAIN RESISTANT



WATERPROOF



SULFIDE RESISTANT



REACH COMPLIANT



INDOOR OUTDOOR