

INDOOR - OUTDOOR

Hemp Patterns

made from 75% sustainable hemp yarn



**BECAUSE NATURE
NEEDS ALL OF US**

INDOOR - OUTDOOR



CHARACTERISTICS	Patterns	Fjord	Spiced
Composition:	75% Hemp / 25% PL HUV	33% Hemp / 67% PL HUV	30% Hemp / 70% PL HUV
Weight:	542 g/m ²	300 g/m ²	486 g/m ²
Roll Width:	min. 140 cm	min. 140 cm	min. 140 cm
Roll Length:	+/- 25 m	+/- 20 - 25 m	+/- 20 - 25 m
Abrasion: (Martindale)	>24.000 cycles	>20.000 cycles	>10.000 cycles
Colour Fastness to Light:	7 ISO 105-B02 (Blue Wool Scale)	Colour Fastness to Light: 6/7 ISO 105-B04 (Blue Wool Scale)	
Light:	6/7 ISO 105-B04 (Blue Wool Scale)	Rubbing (dry): 4/5 ISO 105-X12 (Grey Scale)	
Rubbing (dry):	5 ISO 105-X12 (Grey Scale)	Rubbing (wet): 3 ISO 105-X12 (Grey Scale)	
Rubbing (wet):	4/5 ISO 105-X12 (Grey Scale)	Chlorinate: 4/5 ISO 105-E03 2010	
Seawater:	5 ISO 105-E02 1996	Pilling: 4 ISO 12945-2 2002	
Chlorinate:	5 ISO 105-E03 2010	Dry clean Fastness: Colour change 4-5 ISO D01 1995	
Pilling:	4/5 ISO 12945-2 2002		
Seam Slippage Width:	5 mm ISO 13936-2		
Length:	2 mm ISO 13936-2		

SUSTAINABILITY

Made from 75% sustainable hemp yarn

No chemicals were used

REACH

Special "ECO" treatment: waterproof and stainless

The Hemp Collection fabrics are treated with a special "ECO" finish; the raw fabric is first washed to remove any kind of wax and oil with a natural soap, extracted from lemon fermentation.

A special silicone high concentration treatment is then applied, to create an invisible surface layer with a molecular structure 2000 times smaller than water, which gives mechanical waterproofing to the fabric surface, like water drops dancing on much smaller spheres that do not allow penetration through the fabric.

The "ECO" treatment is PFOA free, resistant to wash, safe for skin contact and respectful of the environment

CARE AND CLEANING



For optimum care and cleaning please read the following instructions and recommendations.

Cleaning instructions

Brush off dirt before it becomes embedded in the fabrics and wipe up spills or clean quickly after a stain appears. The quicker you clean spills and stains, the easier they can be removed.

Fabric can be spot washed by sponging briskly with a soapy solution of natural soap in lukewarm water. Rinse thoroughly and allow to air dry.

SAMPLES AND ENQUIRES

samples: samples@vyvafabrics.nl | orders: info@vyvafabrics.nl



SOFT



OEKO-TEX®
STANDARD 100



NATURAL
PRODUCT



SOLAR
ENDURANCE



WATER
RESISTANT



INDOOR
OUTDOOR



REACH
COMPLIANT



30 DEGREE
WASH

INFO@VYVAFABRICS.NL

WWW.VYVAFABRICS.NL

TEL +31 (0)20 6599523



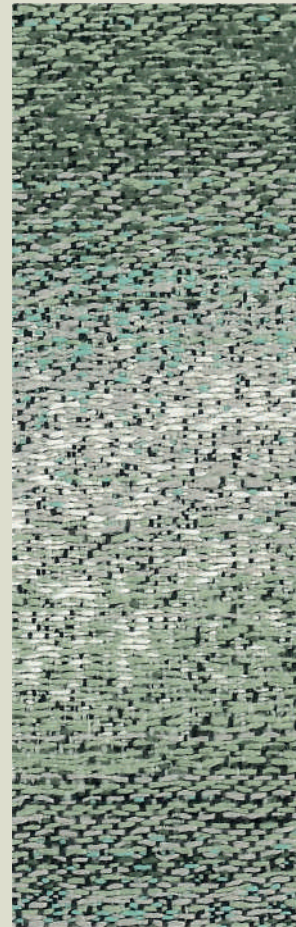
7106
FOREST ROSEMIST



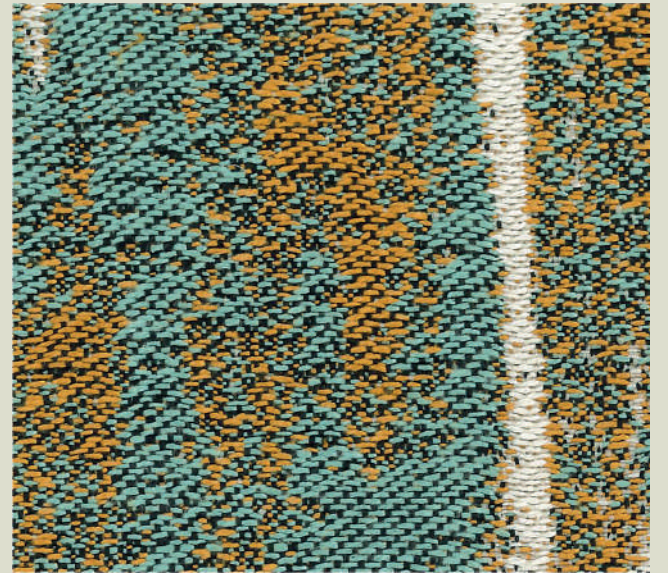
7101
IKAT SUNSET



770-31
SPICED NUTMEG



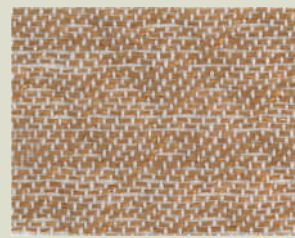
7104
AQUARELLE SEAMIST



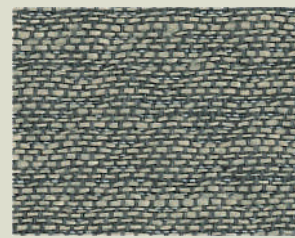
7100
IKAT POOL



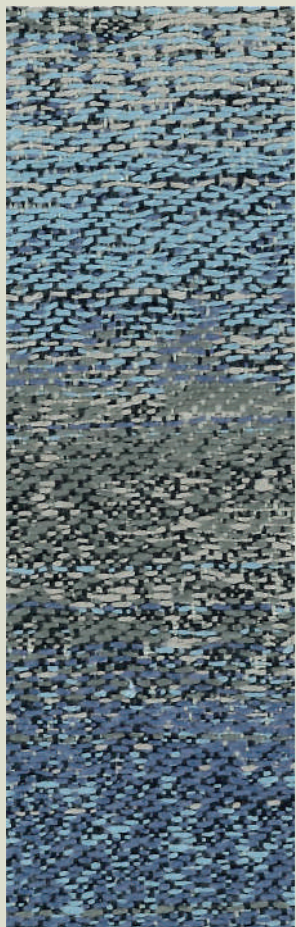
770-07
SPICED PAPRIKA



770-36
SPICED GINGER



770-01
SPICED CUMIN



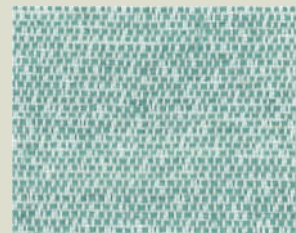
7103
AQUARELLE WATERCOLOUR



770-39
SPICED BILBERRY



770-06
SPICED CINNAMON



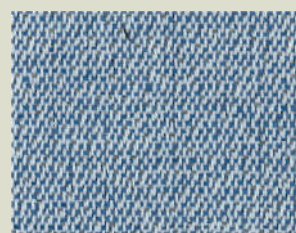
771-34
FJORD SEAMIST



770-04
SPICED CARDAMON



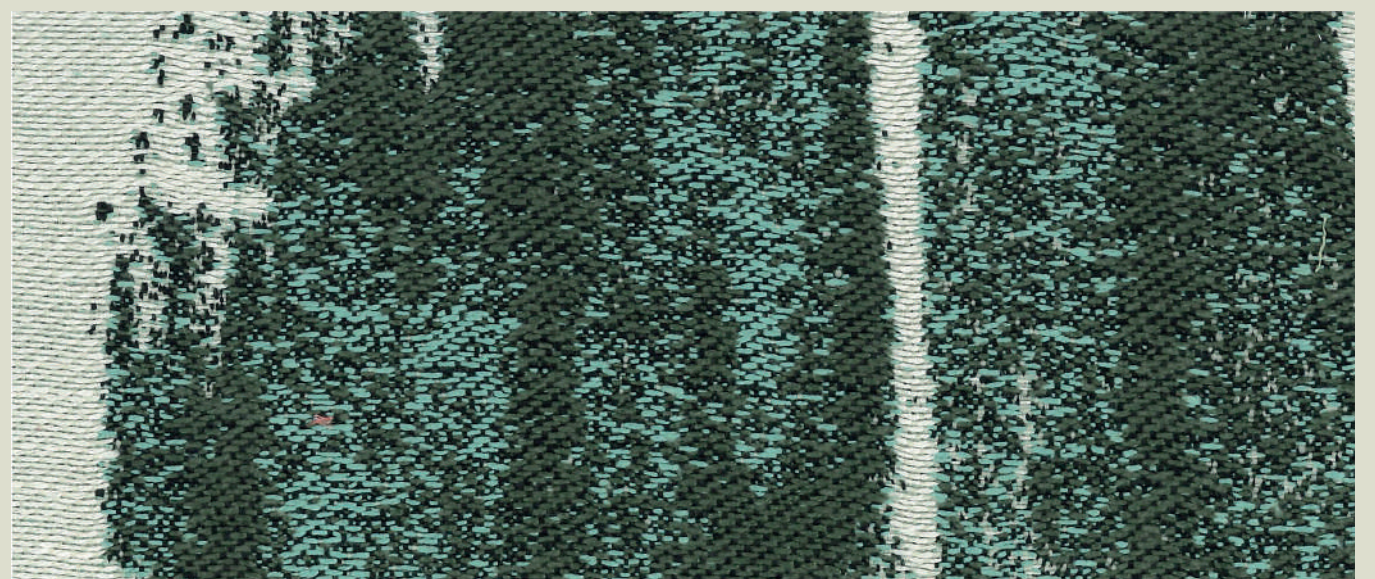
770-05
SPICED TARRAGON



771-39
FJORD WATERFALL



7105
AQUARELLE AFTERGLOW



7102
IKAT SEAWEED