

SEGU - FRECKLE - PUKKA

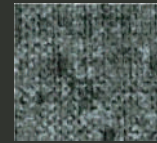
INDOOR - OUTDOOR



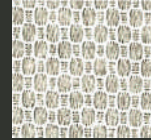
SEGU 5002 SE
RED SNAPPER



SEGU 5006 SE
OYSTER



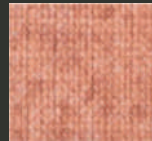
5000 SE
HARBOUR



5019 PU
JASMIN



FRECKLE 5025 FR
GRAPEFRUIT



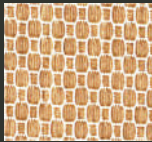
5014 SE
FLAMINGO



PUKKA 5022 PU
RHUBARB



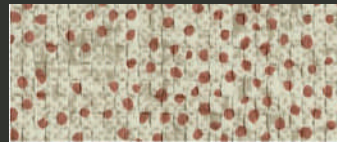
5003 SE
SHORE



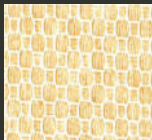
5018 PU
TANGERINE



5011 SE
SALMON



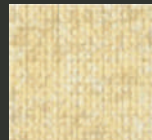
FRECKLE 5028 FR
CHOCOLAT



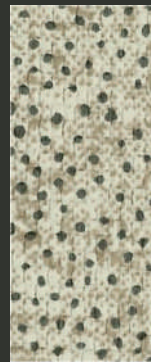
5015 PU
PEACH



5016 PU
VANILLA CHAI



5007 SE
SAND



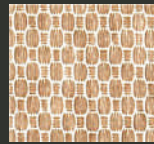
5027 FR
OATMEAL



SEGU 5005 SE
REEF



SEGU 5010 SE
CORAL



5021 PU
ROSEHIP



SEGU 5001 SE
DEEP WATER



5004 SE
BAY



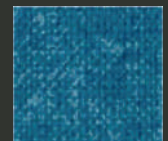
PUKKA 5020 PU
FENNEL



FRECKLE 5029 FR
SPINACH



SEGU 5013 SE
LAGOON



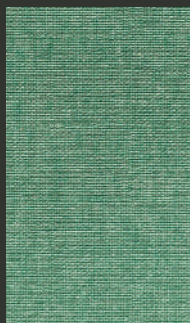
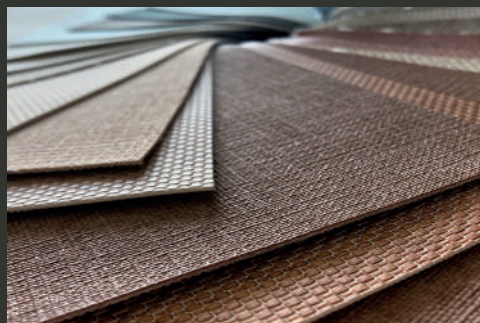
5012 SE
PACIFIC



5017 PU
CHAMOMILLE



5026 FR
EUCALYPTUS



CHARACTERISTICS

INDOOR - OUTDOOR

Composition:	100% PVC
Backing:	100% CO
Weight [Segu / Freckle]:	760 g/m ²
Weight [Pukka]:	920 g/m ²
Roll Width:	min. 140 cm
Roll Length:	+/- 25 m
Abrasion Resistance:	150.000 cycles (MARTINDALE)
Light Fastness:	>6 ISO 105-B02 (Blue Wool Scale)
Colour Fastness to	
Artificial Weathering:	>6 ISO 105-B04 (Blue Wool Scale) [Pukka]
Chlorinated Water:	4-5 ISO 105-E03 (Grey Scale)
Saliva:	4 DIN 53160-1 (Grey Scale)
Alkaline Perspiration:	4 ISO 105-E04 (Grey Scale)
Acid Perspiration:	4 ISO 105-E04 (Grey Scale)
Resistance to	
Ammoniac Solution (Urine):	Good
Artificial Blood:	Good
Bleach (4,5% Chlorine):	No Change
Ethyl Alcohol 96% Vol.:	4 DIN 54021 (Grey Scale) [Segu / Freckle]
Ethyl Alcohol 70% Vol.:	4-5 DIN 54021 (Grey Scale) [Pukka]
Flame Retardancy*:	EU EN 1021 Part 1 & 2 EU IMO FTP 2010 Code Part 8 UK BS5852 (CRIB 5) DE DIN 4102 (B2) [Segu / Freckle] IT UNI 9175 Classe 1.IM FR NF P 92-507 (M2) US FMVSS 302

*This term and any corresponding data refer to the typical performance in the specific tests indicated and should not be construed to imply the behaviour of this or any other material under actual fire conditions.

FINISHES AND TREATMENTS

Free of AZO / CFC / PCP / PCB / PCT

Perspiration resistant, Urine resistant, Saliva resistant, Blood resistant

Bacterial Resistance:	JISZ 2801 Sanitized
Fungal Resistance:	EN ISO 846 A Sanitized
Antibacterial:	Will not support microbial growth including MRSA

SUSTAINABILITY Phthalate Free, REACH, RoHS

CARE AND CLEANING



For optimum care and cleaning please read the following instructions and recommendations.

Disinfectant Use

To minimize the risk of contamination and spreading of bacteria and viruses, good hygiene, good maintenance, and regular cleaning and disinfection of fabrics is essential.

The virus that causes COVID-19 is a so-called enveloped virus with a fatty outside layer. This structure is easily destroyed using regular surface disinfectants and detergents.

Cleaners and disinfectants have been tested with no adverse effects when cleaning guidelines are followed as directed:

- Clean surface with soap and water to remove all visible dirt and stains (stains and spills should be removed immediately);
- Rinse surface with clean water and wipe with clean towel;
- Disinfect surface by gently rubbing with a cloth or sponge moistened in a disinfectant based on a 70% alcohol solution or 1% chlorine bleach solution. When using a disinfectant alcohol based, please consult the Material Technical Specifications to confirm its resistance to the solution. Always try the cleaning method in a hidden area first to see the results.
- Rinse and dry with a cotton cloth (do not saturate the surface)
- Do not use multipurpose products, waxes, solvents or abrasives;
- For optimal results, we recommend regular maintenance of the product.

Cleaning after Disinfection:

- Rub gently with a cloth or sponge moistened in a soapy water solution;
- Stains or spills should be removed immediately;
- Rinse and dry with a cotton cloth;
- Do not use multipurpose products, waxes, solvents or abrasives;
- For optimal results, we recommend a regular maintenance of the product.

Incorrect handling of the product during assembling and upholstery, as well as the non-observance of the care and cleaning instructions or the use of inadequate cleaning products or instruments may damage the protective layer irreversibly.

Some textile dyes, such as those used in jeans or others may affect the surface of the synthetic leathers permanently. The migration of textile dyes or any other external contaminants is expressly excluded from any guarantee.

SAMPLES AND ENQUIRES

samples: samples@vyvafabrics.nl | **orders:** info@vyvafabrics.nl