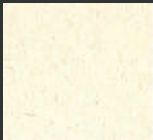


MOCKA

INDOOR



5210 MO
SAND



5209 MO
IVORY



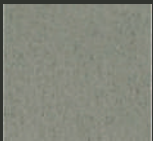
5212 MO
SEA SAND



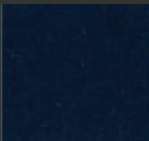
5222 MO
TWILLIGHT



5204 MO
MARINA



5230 MO
ROCK



5205 MO
NAVY BLUE



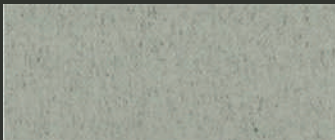
5245 MO
ROYAL BLUE



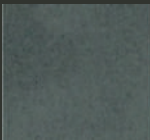
5214 MO
CAMEL



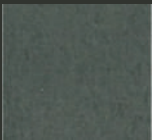
5213 MO
WHEAT



5200 MO
LIGHT GREY



5227 MO
CHARCOAL



5226 MO
GRANITE



5247 MO
BURBANK



5234 MO
PERU



5215 MO
ESPRESSO



5246 MO
WILLOW



5239 MO
BURGUNDY



5238 MO
MOSS



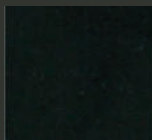
5206 MO
FOREST



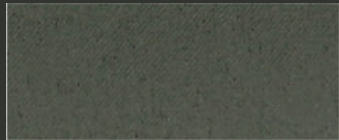
5231 MO
STRING



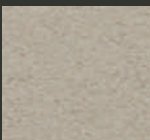
5211 MO
PEARL GREY



5244 MO
SLATE BLACK



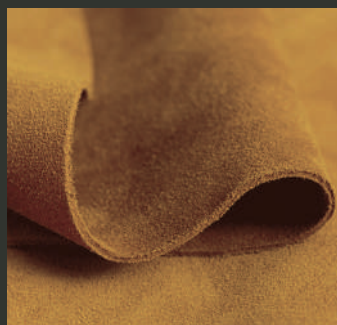
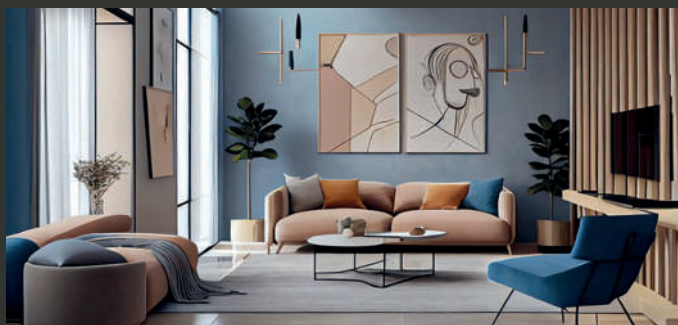
5232 MO
TAUPE



5207 MO
ALMOND



5208 MO
ICE



CHARACTERISTICS

INDOOR

Composition:	100% Polyester
Weight:	485 g/m ²
Roll Width:	min. 140 cm
Roll Length:	+/- 25 m
Abrasion Resistance:	>40.000 cycles (MARTINDALE)
Light Fastness:	4 ISO 105-B02 (Blue Wool Scale)
Colour Fastness to	
Rubbing (dry):	4-5 EN ISO DIN 54021 (Grey Scale)
Rubbing (wet):	4-5 EN ISO 105X12:2002 (Grey Scale)
Seam Slippage:	1,5 ISO 13936-2
Pilling:	4/5 (scale 1-5) ISO 12945-2

Flame Retardancy*: US CAL TB 117-2013, Section E

*This term and any corresponding data refer to the typical performance in the specific tests indicated and should not be construed to imply the behaviour of this or any other material under actual fire conditions.

SUSTAINABILITY

OEKO-TEX® Standard 100

REACH

The fabric is extra thick and double-faced. It is also available single sided and treated to meet the following standards:

BS5852:2006 (CRIB 5)
EN 1021 Part 1 & 2
DIN 4102-1 (B1)
IMO FTP 2010 Code MSC.307 (88) Part 8
UNI 9175 Class 1.IM

Minimum quantity is 25 meters, weight is 350 g/m².

CARE AND CLEANING



For optimum care and cleaning please read the following instructions and recommendations.

Cleaning instructions

Brush off dirt before it becomes embedded in the fabrics and wipe up spills or clean quickly after a stain appears. The quicker you clean spills and stains, the easier they can be removed.

Fabric can be spot washed by sponging briskly with a soapy solution of natural soap in lukewarm water. Rinse thoroughly and allow to air dry.

Cleaning after Disinfection:

The fabric should be cleaned periodically in order to maintain its appearance and prevent build-up of dirt and contaminants. Any stain, spills, or soiling should be cleaned up immediately to prevent the possibility of permanent staining. Use a mixture of 1:1 liquid soap (neutral pH) and water to remove stains on the surface of the material.

Cleaning methods to remove tougher stains

Beer, egg, milk, cream:

To be treated in neutral detergent solution, rinsing.

Blood, Fruit, Juice, Syrup, Vegetables, Jam, Jelly:

Neutral detergent solution, dried up stains to be treated several times.

Ketchup, Coffee, Tea:

To be washed in neutral detergent solution, discolorations to be treated with citric acid, well rinsing.

Cocoa, Chocolate:

To be rubbed with washing paste, rinsing with water.

Chewing gum:

Swelling with Ethyl alcohol, to be removed mechanically.

Ballpoint, felt-tip pen, Lipstick, Shoe Polish, Oil and Fat:

To be dissolved with Ethyl alcohol (colourless liquid) dabbing, post-treatment with detergent solution, rinsing.

Mustard, Wine, Liqueur:

To be washed in detergent solution, treatment with Citric acid, well rinsing.

For cleaning: use a soft white cotton cloth saturated with the recommended cleaning agent and rub the stain in random circles, ten times or more. Pat dry with another soft white cotton cloth and check the results. Do not use steel bristle brushes, abrasive scouring pads or metal, these cause permanent damage to the fabric. After cleaning, rinse the area with clean water, then dry with a clean, lint-free cloth.

SAMPLES AND ENQUIRES

samples: samples@vyvafabrics.nl | **orders:** info@vyvafabrics.nl

VYVA
FABRICS



RECYCLABLE



SOFT



KID & PET
FRIENDLY



STAIN
RESISTANT



OEKO-TEX®
STANDARD 100



BREATHABLE



REACH
COMPLIANT



INDOOR

INFO@VYVAFABRICS.NL

WWW.VYVAFABRICS.NL

TEL +31 (0)20 6599523